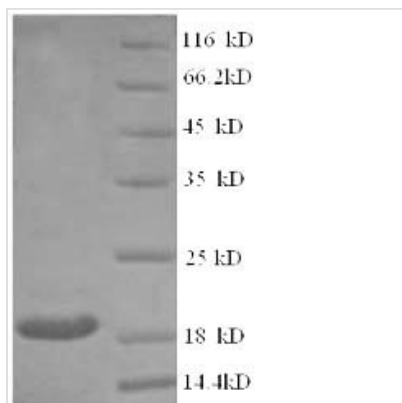




# Recombinant Human Clathrin heavy chain 2 (CLTCL1), partial

<b>Product Code</b>	CSB-EP005594HU
<b>Relevance</b>	Clathrin is the major protein of the polyhedral coat of coated pits and vesicles. Two different adapter protein complexes link the clathrin lattice either to the plasma mbrane or to the trans-Golgi network .
<b>Storage</b>	The shelf life is related to many factors, storage state, buffer ingredients, storage temperature and the stability of the protein itself. Generally, the shelf life of liquid form is 6 months at -20°C/-80°C. The shelf life of lyophilized form is 12 months at -20°C/-80°C.
<b>Uniprot No.</b>	P53675
<b>Alias</b>	Clathrin heavy chain on chromosome 22 ;CLH-22
<b>Product Type</b>	Recombinant Protein
<b>Immunogen Species</b>	Homo sapiens (Human)
<b>Purity</b>	Greater than 90% as determined by SDS-PAGE.
<b>Sequence</b>	LLVLSPRLDHTWTVSFFSKAGQLPLVKPYLRVQSHNNKSVNEALNHLLTEEE DYQGLRASIDAYDNFDNISLAQQLEKHQLMEFRCIAAYLYKGNNWWAQSVEL CKKDHLKYDAMQHA AESRDAELA QKLLQWFLEEGKRECF
<b>Lead Time</b>	3-7 business days
<b>Research Area</b>	Signal Transduction
<b>Source</b>	E.coli
<b>Gene Names</b>	CLTCL1
<b>Expression Region</b>	1423-1566aa
<b>Notes</b>	Repeated freezing and thawing is not recommended. Store working aliquots at 4°C for up to one week.
<b>Tag Info</b>	N-terminal 6xHis-tagged
<b>Mol. Weight</b>	20.8kDa
<b>Protein Description</b>	Partial
<b>Image</b>	



(Tris-Glycine gel) Discontinuous SDS-PAGE (reduced) with 5% enrichment gel and 15% separation gel.

## Reconstitution

We recommend that this vial be briefly centrifuged prior to opening to bring the contents to the bottom. Please reconstitute protein in deionized sterile water to a concentration of 0.1-1.0 mg/mL. We recommend to add 5-50% of glycerol (final concentration) and aliquot for long-term storage at -20°C/-80°C. Our default final concentration of glycerol is 50%. Customers could use it as reference.