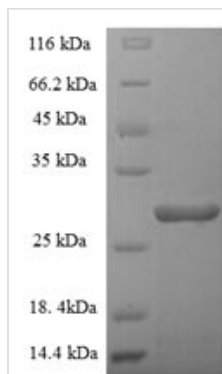




Recombinant Human Granulocyte-macrophage colony-stimulating factor (CSF2)

Product Code	CSB-EP006045HU
Relevance	Cytokine that stimulates the growth and differentiation of hatopoietic precursor cells from various lineages, including granulocytes, macrophages, eosinophils and erythrocytes.
Storage	The shelf life is related to many factors, storage state, buffer ingredients, storage temperature and the stability of the protein itself. Generally, the shelf life of liquid form is 6 months at -20°C/-80°C. The shelf life of lyophilized form is 12 months at -20°C/-80°C.
Uniprot No.	P04141
Alias	Colony-stimulating factor ;CSFMolgramostin;Sargramostim
Product Type	Recombinant Protein
Immunogen Species	Homo sapiens (Human)
Purity	Greater than 90% as determined by SDS-PAGE.
Sequence	APARSPSPSTQPWEHVNAIQEARRLLNLSRDTA AEMNETVEVISEMFDLQEPT CLQTRLELYKQGLRGLTKLKGPLTMMASHYKQHCPPTPETSCATQIITFESFK ENLKDFLLVIPFDCWEPVQE
Lead Time	3-7 business days
Research Area	Immunology
Source	E.coli
Gene Names	CSF2
Expression Region	18-144aa
Notes	Repeated freezing and thawing is not recommended. Store working aliquots at 4°C for up to one week.
Tag Info	N-terminal 6xHis-SUMO-tagged
Mol. Weight	30.5kDa
Protein Description	Full Length of Mature Protein
Image	



(Tris-Glycine gel) Discontinuous SDS-PAGE (reduced) with 5% enrichment gel and 15% separation gel.

Description

Incorporation of the gene encoding the Human CSF2 protein (18-144aa) into a plasmid vector forms recombinant plasmid, which is then transformed into e.coli cells. baculovirus cells containing the recombinant plasmid that can survive in the presence of a specific antibiotic are selected and cultured under conditions conducive to the expression of the gene of interest. The protein features a N-terminal 6xHis-SUMO tag fusion. Following expression, the recombinant Human CSF2 protein is isolated and purified from the cell lysate using affinity purification. Denaturing SDS-PAGE is then employed to resolve the resulting recombinant protein, demonstrating a purity greater than 90%.

Reconstitution

We recommend that this vial be briefly centrifuged prior to opening to bring the contents to the bottom. Please reconstitute protein in deionized sterile water to a concentration of 0.1-1.0 mg/mL. We recommend to add 5-50% of glycerol (final concentration) and aliquot for long-term storage at -20°C/-80°C. Our default final concentration of glycerol is 50%. Customers could use it as reference.