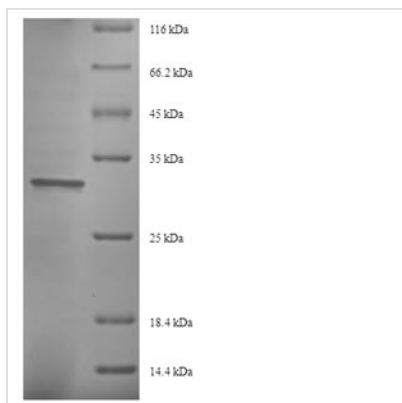




Recombinant *Saccharomyces cerevisiae*

Eukaryotic translation initiation factor 5A-1 (HYP2)

Product Code	CSB-EP007573SVG
Relevance	mRNA-binding protein involved in translation elongation. Has an important function at the level of mRNA turnover, probably acting downstream of decapping. Involved in actin dynamics and cell cycle progression, mRNA decay and probably in a pathway involved in stress response and maintenance of cell wall integrity. Essential for polarized growth, a process necessary for G1/S transition. May mediate large range of effects of the polyamine spermidine in the cell.
Storage	The shelf life is related to many factors, storage state, buffer ingredients, storage temperature and the stability of the protein itself. Generally, the shelf life of liquid form is 6 months at -20°C/-80°C. The shelf life of lyophilized form is 12 months at -20°C/-80°C.
Uniprot No.	P23301
Alias	Hypusine-containing protein HP2 eIF-4D
Product Type	Recombinant Protein
Immunogen Species	<i>Saccharomyces cerevisiae</i> (strain ATCC 204508 / S288c) (Baker's yeast)
Purity	Greater than 90% as determined by SDS-PAGE.
Sequence	SDEEHTFETADAGSSATYPMQCSALRKNGFVVIKSRPCKIVDMSTSKTGKHHG AKVHLVAIDIFTGKKLEDLSPSTHNMEVPVVKRNEYQLLDIDDGFLSLMNMDGD TKDDVKAPEGELGDSLQTADEGKDLMVTIISAMGEEAAISFKEAARTD
Lead Time	Delivery time may differ from different purchasing way or location, please kindly consult your local distributors for specific delivery time.
Research Area	Others
Source	E.coli
Gene Names	HYP2
Expression Region	2-157aa
Notes	Repeated freezing and thawing is not recommended. Store working aliquots at 4°C for up to one week.
Tag Info	N-terminal 6xHis-SUMO-tagged
Mol. Weight	33.0kDa
Protein Description	Full Length of Mature Protein
Image	



(Tris-Glycine gel) Discontinuous SDS-PAGE (reduced) with 5% enrichment gel and 15% separation gel.

Reconstitution

We recommend that this vial be briefly centrifuged prior to opening to bring the contents to the bottom. Please reconstitute protein in deionized sterile water to a concentration of 0.1-1.0 mg/mL. We recommend to add 5-50% of glycerol (final concentration) and aliquot for long-term storage at -20°C/-80°C. Our default final concentration of glycerol is 50%. Customers could use it as reference.