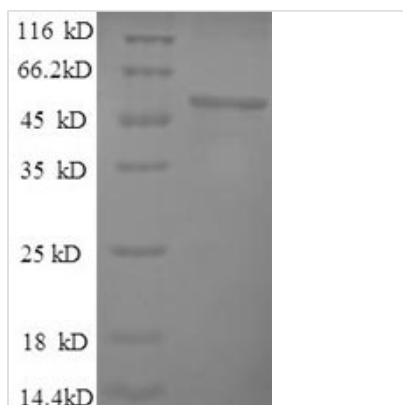




Recombinant Mouse Alpha-enolase (Eno1), partial

Product Code	CSB-EP007670MO
Relevance	Multifunctional enzyme that, as well as its role in glycolysis, plays a part in various processes such as growth control, hypoxia tolerance and allergic responses . May also function in the intravascular and pericellular fibrinolytic syst due to its ability to serve as a receptor and activator of plasminogen on the cell surface of several cell-types such as leukocytes and neurons. Stimulates immunoglobulin production .
Storage	The shelf life is related to many factors, storage state, buffer ingredients, storage temperature and the stability of the protein itself. Generally, the shelf life of liquid form is 6 months at -20°C/-80°C. The shelf life of lyophilized form is 12 months at -20°C/-80°C.
Uniprot No.	P17182
Alias	2-phospho-D-glycerate hydro-lyase;Enolase 1Non-neural enolase ;NNE
Product Type	Recombinant Protein
Immunogen Species	Mus musculus (Mouse)
Purity	Greater than 90% as determined by SDS-PAGE.
Sequence	SILRIHAREIFDSRGNPTVEVDLYTAKGLFRAAVPSGASTGIYEALELRDNDKTR FMGKGVSQAVEHINKTIAPALVSKKVNVEQEKIDKLMIEMDGTENKSKFGANA ILGVSLAVCKAGAVEKGVPLYRHIADLAGNPEVILPVPAFNVINGGSHAGNKLA MQEFMILPVGASSFREAMRIGAEVYHNLKNVIKEKYGKDATNVGDEGGFAPNI LENKEALELLKTAIAKAGYTDQVVIGMDVAASEFYRSGKYDLDFKSPDDPSRYI TPDQLADLYKSFVQNPVVSIEDPFDQDDWGAWQKFTASAGIQVVGDDLTVT NPKRIAKAASEKSCNCLLLKVNQIGSVTESLQACKLAQSNWGWVMVSHRSGE TEDTFIADLVVGLCTGQIKTGAPCRSERLAKYNQILRIEEELGSKAKFAGRSFRN PLA
Lead Time	3-7 business days
Research Area	Others
Source	E.coli
Gene Names	Eno1
Expression Region	2-433aa
Notes	Repeated freezing and thawing is not recommended. Store working aliquots at 4°C for up to one week.
Tag Info	N-terminal 6xHis-tagged
Mol. Weight	50.9kDa
Protein Description	Partial
Image	



(Tris-Glycine gel) Discontinuous SDS-PAGE (reduced) with 5% enrichment gel and 15% separation gel.

Reconstitution

We recommend that this vial be briefly centrifuged prior to opening to bring the contents to the bottom. Please reconstitute protein in deionized sterile water to a concentration of 0.1-1.0 mg/mL. We recommend to add 5-50% of glycerol (final concentration) and aliquot for long-term storage at -20°C/-80°C. Our default final concentration of glycerol is 50%. Customers could use it as reference.