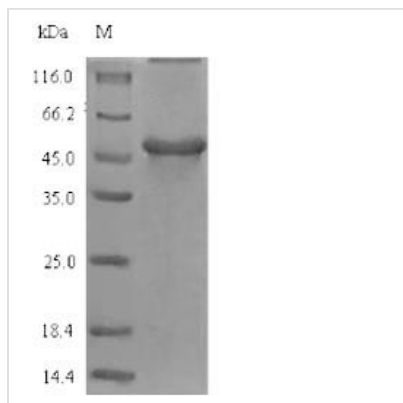


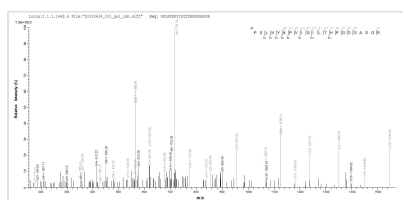


# Recombinant Glycine max Gamma-glutamyl hydrolase

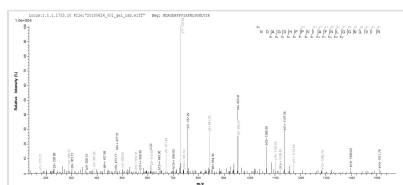
<b>Product Code</b>	CSB-EP009389GGV
<b>Relevance</b>	Hydrolysis of a gamma-glutamyl bond.
<b>Storage</b>	The shelf life is related to many factors, storage state, buffer ingredients, storage temperature and the stability of the protein itself. Generally, the shelf life of liquid form is 6 months at -20°C/-80°C. The shelf life of lyophilized form is 12 months at -20°C/-80°C.
<b>Uniprot No.</b>	P93164
<b>Alias</b>	Conjugase GH Gamma-Glu-X carboxypeptidase
<b>Product Type</b>	Recombinant Protein
<b>Immunogen Species</b>	Glycine max (Soybean) (Glycine hispida)
<b>Purity</b>	Greater than 90% as determined by SDS-PAGE.
<b>Sequence</b>	ATSHDDHIFLPSQLHDDSVSCTATDPSLNYKPVIGILTHPGDGASGRLSNATG VSYIAASYVKFVESGGARVIPLIYNESPENLNKKLDLVNGVLF TGGWAVSGPYL DTLGNIFKKALERNDAGDHFPVIAFNLGGNLVIRIVSEQTDILEPFTASSLPSSLV LWNEANAKGSLFQRFPSDLLTQLKTDCLVLHNRHYAISPRKLQYNTKLSDFFEI LATSGDRDGKTFVSTARGRKYPVTVNLWQPEKNAFEWATSLKAPHTEDAIRV TQSTANFFISEARKSTNTPDAQKVRDSLIIYNYKPTFGGTAGKGYDQVYLFE
<b>Lead Time</b>	Delivery time may differ from different purchasing way or location, please kindly consult your local distributors for specific delivery time.
<b>Research Area</b>	Signal Transduction
<b>Source</b>	E.coli
<b>Protein Names</b>	Recommended name: Gamma-glutamyl hydrolase EC= 3.4.19.9 Alternative name(s): Conjugase GH Gamma-Glu-X carboxypeptidase
<b>Expression Region</b>	22-342aa
<b>Notes</b>	Repeated freezing and thawing is not recommended. Store working aliquots at 4°C for up to one week.
<b>Tag Info</b>	N-terminal 6xHis-SUMO-tagged
<b>Mol. Weight</b>	51.3kDa
<b>Protein Description</b>	Full Length of Mature Protein
<b>Image</b>	



(Tris-Glycine gel) Discontinuous SDS-PAGE (reduced) with 5% enrichment gel and 15% separation gel.



Based on the SEQUEST from database of E.coli host and target protein, the LC-MS/MS Analysis result of CSB-EP009389GGV could indicate that this peptide derived from E.coli-expressed Glycine max (Soybean) (Glycine hispida) N/A.



Based on the SEQUEST from database of E.coli host and target protein, the LC-MS/MS Analysis result of CSB-EP009389GGV could indicate that this peptide derived from E.coli-expressed Glycine max (Soybean) (Glycine hispida) N/A.

## Reconstitution

We recommend that this vial be briefly centrifuged prior to opening to bring the contents to the bottom. Please reconstitute protein in deionized sterile water to a concentration of 0.1-1.0 mg/mL. We recommend to add 5-50% of glycerol (final concentration) and aliquot for long-term storage at -20°C/-80°C. Our default final concentration of glycerol is 50%. Customers could use it as reference.