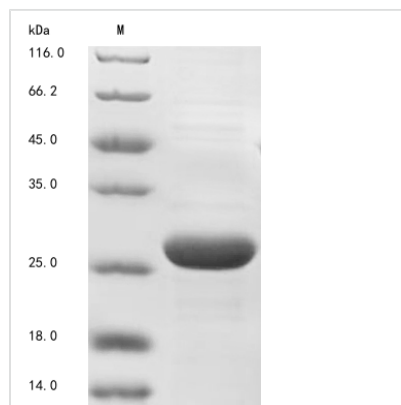




Recombinant human Somatotropin

| | |
|----------------------------|---|
| Product Code | CSB-EP009407HU |
| Storage | The shelf life is related to many factors, storage state, buffer ingredients, storage temperature and the stability of the protein itself. Generally, the shelf life of liquid form is 6 months at -20°C/-80°C. The shelf life of lyophilized form is 12 months at -20°C/-80°C. |
| Uniprot No. | P01241 |
| Storage Buffer | Tris-based buffer?50% glycerol |
| Product Type | Recombinant Proteins |
| Immunogen Species | Homo sapiens (Human) |
| Purity | Greater than 90% as determined by SDS-PAGE. |
| Sequence | FPTIPLSRFLDNAMLRAHRLHQLAFDTYQEFEEAYIPKEQKYSFLQNPQTSLCF SESIPTPSNREETQQKSNLELLRISLLLIQSWLEPVQFLRSVFANSLVYGASDSN VYDLLKDLEEGIQTLMGRLDGSPRTGQIFKQTYSKFDTNSHNDDALLKNYGL LYCFRKDMDKVETFLRIVQCRSVEGSCGF |
| Research Area | Developmental Biology |
| Source | E.coli |
| Gene Names | GH1 |
| Expression Region | 27-217aa |
| Notes | Repeated freezing and thawing is not recommended. Store working aliquots at 4°C for up to one week. |
| Tag Info | N-terminal 10xHis-tagged |
| Mol. Weight | 25.7 kDa |
| Protein Description | Full Length of Mature Protein |

Image



(Tris-Glycine gel) Discontinuous SDS-PAGE (reduced) with 5% enrichment gel and 15% separation gel.