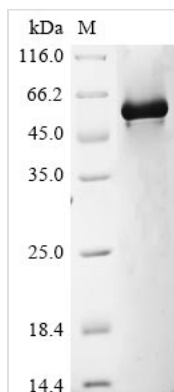




Recombinant Human Glypican-1 (GPC1), partial

Product Code	CSB-EP009703HU1
Storage	The shelf life is related to many factors, storage state, buffer ingredients, storage temperature and the stability of the protein itself. Generally, the shelf life of liquid form is 6 months at -20°C/-80°C. The shelf life of lyophilized form is 12 months at -20°C/-80°C.
Uniprot No.	P35052
Form	Liquid or Lyophilized powder
Storage Buffer	If the delivery form is liquid, the default storage buffer is Tris/PBS-based buffer, 5%-50% glycerol. If the delivery form is lyophilized powder, the buffer before lyophilization is Tris/PBS-based buffer, 6% Trehalose.
Product Type	Recombinant Protein
Immunogen Species	Homo sapiens (Human)
Purity	Greater than 85% as determined by SDS-PAGE.
Sequence	GCGNPKVNPQGPGPEEKRRRGKLAPRERPPSGTLEKLVSEAKAQLRDVQDF WISLPGTLCSEKMALSTASDDRCWNGMARGRYLPEVMGDGLANQINNPEVE VDITKPDMTIRQQIMQLKIMTNRLRSAYNGNDVDFQDASDDGSGSGSGDGL DDLC SRK VSRKSSSRTPLTHALPGLSEQEGQKTS
Lead Time	3-7 business days
Research Area	Cancer
Source	E.coli
Gene Names	GPC1
Expression Region	342-530aa
Notes	Repeated freezing and thawing is not recommended. Store working aliquots at 4°C for up to one week.
Tag Info	N-terminal 10xHis-GST-tagged and C-terminal Myc-tagged
Mol. Weight	55.7 kDa
Protein Description	Partial

Image



(Tris-Glycine gel) Discontinuous SDS-PAGE (reduced) with 5% enrichment gel and 15% separation gel.



Description

The expression of the recombinant Human GPC1 protein entails introducing a DNA expression vector containing the gene for the desired protein (342-530aa) into e.coli cells through transformation. Subsequently, the cells are cultured to facilitate the expression of the intended protein. The protein features a N-terminal 10xHis-GST tag and C-terminal Myc tag fusion. The resulting recombinant Human GPC1 protein is then gathered and purified from the cell lysate using affinity purification. Its purity, determined by SDS-PAGE, exceeds 85%.

Reconstitution

We recommend that this vial be briefly centrifuged prior to opening to bring the contents to the bottom. Please reconstitute protein in deionized sterile water to a concentration of 0.1-1.0 mg/mL. We recommend to add 5-50% of glycerol (final concentration) and aliquot for long-term storage at -20°C/-80°C. Our default final concentration of glycerol is 50%. Customers could use it as reference.