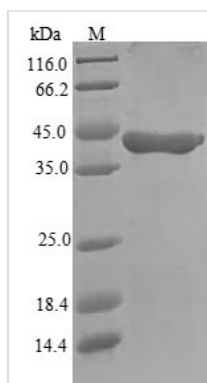




# Recombinant Mouse Granzyme A (Gzma)

<b>Product Code</b>	CSB-EP010081MO
<b>Relevance</b>	Abundant protease in the cytosolic granules of cytotoxic T-cells and NK-cells which activates caspase-independent cell death with morphological features of apoptosis when delivered into the target cell through the immunological synapse. It cleaves after Lys or Arg. Cleaves APEX1 after 'Lys-31' and destroys its oxidative repair activity. Cleaves the nucleosome assembly protein SET after 'Lys-189', which disrupts its nucleosome assembly activity and allows the SET complex to translocate into the nucleus to nick and degrade the DNA
<b>Storage</b>	The shelf life is related to many factors, storage state, buffer ingredients, storage temperature and the stability of the protein itself. Generally, the shelf life of liquid form is 6 months at -20°C/-80°C. The shelf life of lyophilized form is 12 months at -20°C/-80°C.
<b>Uniprot No.</b>	P11032
<b>Alias</b>	Autocrine thymic lymphoma granzyme-like serine protease CTLA-3 Fragmentin-1 T cell-specific serine protease 1
<b>Product Type</b>	Recombinant Protein
<b>Immunogen Species</b>	Mus musculus (Mouse)
<b>Purity</b>	Greater than 90% as determined by SDS-PAGE.
<b>Sequence</b>	IIGGDTVVPHSRPYMALLKLSSNTICAGALIEKNWVLTAAHNCNVGKRSKFILGAH SINKEPEQQILT VKKAFPYPCYDEYTREGDLQLVRLKKKATVNRNVAILHLPKK GDDVKPGTRCRVAGWGRFGNKSAPSETLREVNITVIDRKICNDEKHYNFHPVI GLNMICAGDLRGGKDSCNGDSGSPLLCDGILRGITSFGGEKCGDRRWPGVYT FLSDKHLNWIKKIMKGSV
<b>Lead Time</b>	3-7 business days
<b>Research Area</b>	Cell Biology
<b>Source</b>	E.coli
<b>Gene Names</b>	Gzma
<b>Expression Region</b>	29-260aa
<b>Notes</b>	Repeated freezing and thawing is not recommended. Store working aliquots at 4°C for up to one week.
<b>Tag Info</b>	N-terminal 6xHis-B2M-tagged
<b>Mol. Weight</b>	39.6kDa
<b>Protein Description</b>	Full Length of Mature Protein
<b>Image</b>	



(Tris-Glycine gel) Discontinuous SDS-PAGE (reduced) with 5% enrichment gel and 15% separation gel.

## Reconstitution

We recommend that this vial be briefly centrifuged prior to opening to bring the contents to the bottom. Please reconstitute protein in deionized sterile water to a concentration of 0.1-1.0 mg/mL. We recommend to add 5-50% of glycerol (final concentration) and aliquot for long-term storage at -20°C/-80°C. Our default final concentration of glycerol is 50%. Customers could use it as reference.