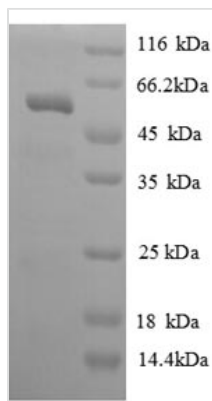




Recombinant Human Kallikrein-7 (KLK7), partial

Product Code	CSB-EP012458HU
Relevance	May catalyze the degradation of intercellular cohesive structures in the cornified layer of the skin in the continuous shedding of cells from the skin surface. Specific for amino acid residues with aromatic side chains in the P1 position. Cleaves insulin A chain at '14-Tyr- -Gln-15' and insulin B chain at '6-Leu- -Cys-7', '16-Tyr- -Leu-17', '25-Phe- -Tyr-26' and '26-Tyr- -Thr-27'. Could play a role in the activation of precursors to inflammatory cytokines.
Storage	The shelf life is related to many factors, storage state, buffer ingredients, storage temperature and the stability of the protein itself. Generally, the shelf life of liquid form is 6 months at -20°C/-80°C. The shelf life of lyophilized form is 12 months at -20°C/-80°C.
Uniprot No.	P49862
Alias	Serine protease 6Stratum corneum chymotryptic enzyme ;hSCCE
Product Type	Recombinant Protein
Immunogen Species	Homo sapiens (Human)
Purity	Greater than 90% as determined by SDS-PAGE.
Sequence	DKIIDGAPCARGSHPWQVALLSGNQLHCGGVLVNERWVLTAAHCKMNEYTVH LGSDTLGDRRAQRIKASKSFRHPGYSTQTHVNDLMLVLKLSQARLSSMVKKV RLPSRCEPPGTTCTVSGWGTTTSPDVTFPSDLMCVDVKLISPQDCTKVYKDLL ENSMCAGIPDSKKNACNGDSGGPLVCRGTLQGLVSWGTFPCGQPNDPGVY TQVCKFTKWINDTMKKHR
Lead Time	Delivery time may differ from different purchasing way or location, please kindly consult your local distributors for specific delivery time.
Research Area	Cancer
Source	E.coli
Gene Names	KLK7
Expression Region	28-253aa
Notes	Repeated freezing and thawing is not recommended. Store working aliquots at 4°C for up to one week.
Tag Info	N-terminal GST-tagged
Mol. Weight	51.7kDa
Protein Description	Partial
Image	



(Tris-Glycine gel) Discontinuous SDS-PAGE (reduced) with 5% enrichment gel and 15% separation gel.

Reconstitution

We recommend that this vial be briefly centrifuged prior to opening to bring the contents to the bottom. Please reconstitute protein in deionized sterile water to a concentration of 0.1-1.0 mg/mL. We recommend to add 5-50% of glycerol (final concentration) and aliquot for long-term storage at -20°C/-80°C. Our default final concentration of glycerol is 50%. Customers could use it as reference.