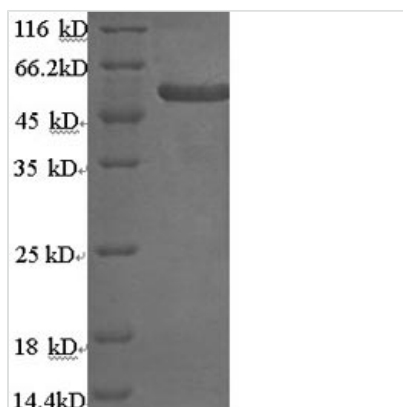




Recombinant Human Keratin, type II cytoskeletal 4 (KRT4)

Product Code	CSB-EP012556HU
Storage	The shelf life is related to many factors, storage state, buffer ingredients, storage temperature and the stability of the protein itself. Generally, the shelf life of liquid form is 6 months at -20°C/-80°C. The shelf life of lyophilized form is 12 months at -20°C/-80°C.
Uniprot No.	P19013
Alias	Cytokeratin-4 ;CK-4Keratin-4 ;K4Type-II keratin Kb4
Product Type	Recombinant Protein
Immunogen Species	Homo sapiens (Human)
Purity	Greater than 90% as determined by SDS-PAGE.
Sequence	<p>MIARQQCVRRGGPRGFSCGSAIVGGGKRGAFSSVSMSSGGAGRCSSGGFGSR</p> <p>SLYNLRGNKSISMSVAGSRQGACFGGAGGFGTGGFGAGGFGAGFGTGGFG</p> <p>GGFGGSFSGKGGPGFPVCPAGGIQEVNTINQSLTPLHVEIDPEIQKVRTEERE</p> <p>QIKLLNNKFASFIDKVQFLEQQNKVLETKWNLLQQQTTTTSSKNLEPLFETYLS</p> <p>VLRKQLDTLGNDKGRQLQSELKTMQDSVEDFKTKYEEEINKRTAAENDFVVLKK</p> <p>DVDAAYLNKVELEAKVDSLNDINFLKVLDAELSQMQTHVSDTSVVLMDNN</p> <p>RNLDLDSIIAEVRAQYEEIAQRSKAEAEALYQTKVQQLQISVDQHGDNLKNTKS</p> <p>EIAELNRMIIQRLRAEIEINIKKQCQTLQVSVADAEQRGENALKDAHSKRVELEAA</p> <p>LQQAKEELARMLREYQELMSVKLALDIEIATYRKLLLEGEEYRMSGECQSAVSIS</p> <p>VVSGSTSTGGISGGLGSGSGFGLSSGFGSGSGSGFGFGGSSVSGSSSSKIISTT</p> <p>TLNKRR</p>
Lead Time	3-7 business days
Research Area	Signal Transduction
Source	E.coli
Gene Names	KRT4
Expression Region	1-534aa
Notes	Repeated freezing and thawing is not recommended. Store working aliquots at 4°C for up to one week.
Tag Info	N-terminal 6xHis-SUMO-tagged
Mol. Weight	73.3kDa
Protein Description	Full Length
Image	



(Tris-Glycine gel) Discontinuous SDS-PAGE (reduced) with 5% enrichment gel and 15% separation gel.

Reconstitution

We recommend that this vial be briefly centrifuged prior to opening to bring the contents to the bottom. Please reconstitute protein in deionized sterile water to a concentration of 0.1-1.0 mg/mL. We recommend to add 5-50% of glycerol (final concentration) and aliquot for long-term storage at -20°C/-80°C. Our default final concentration of glycerol is 50%. Customers could use it as reference.