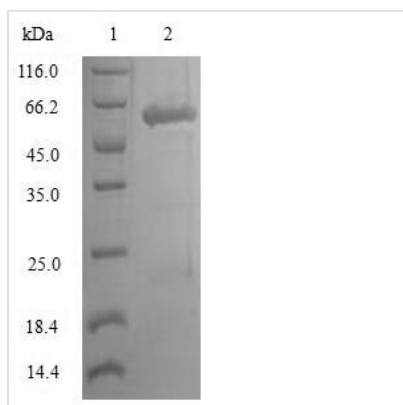


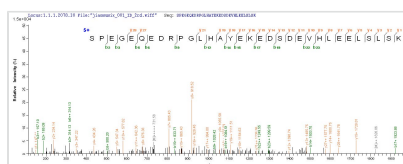


Recombinant Human Lymphocyte-specific protein 1 (LSP1)

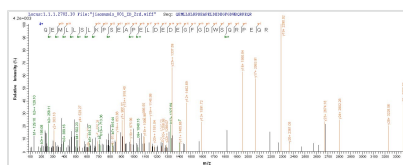
Product Code	CSB-EP013214HU
Relevance	May play a role in mediating neutrophil activation and chemotaxis.
Storage	The shelf life is related to many factors, storage state, buffer ingredients, storage temperature and the stability of the protein itself. Generally, the shelf life of liquid form is 6 months at -20°C/-80°C. The shelf life of lyophilized form is 12 months at -20°C/-80°C.
Uniprot No.	P33241
Alias	47 kDa actin-binding protein 52 kDa phosphoprotein
Product Type	Recombinant Protein
Immunogen Species	Homo sapiens (Human)
Purity	Greater than 90% as determined by SDS-PAGE.
Sequence	MAEASSDPGAEEEREELLGPTAQWSVEDEEEEAVHEQCQHERDRQLQAQDEE GGGHVPERPKQEMLLSLKPSEAPELDEDEGFGDWSQRPEQRQQHEGAQGT LDSGEPPQCRSPEGEQEDRPGLHAYEKEDSDEVHLEELSLSKEGPGPEDTVQ DNLGAAGAEQQEEHQKCQQPRTPSPLVLEGTIEQSSPPLSPTTKLIDRTESL NRSIEKSNSVKKSQPDLPISKIDQWLEQYTQAIETAGRTPKLARQASIELPSMA VASTKSRWETGEVQAQSAAKTPSCKDIVAGDMSKKSLWEQKGGSKTSSTIKS TPSGKRYKFVATGHGKYEKVLVEGGPAP
Lead Time	Delivery time may differ from different purchasing way or location, please kindly consult your local distributors for specific delivery time.
Research Area	Immunology
Source	E.coli
Gene Names	LSP1
Protein Names	Recommended name: Lymphocyte-specific protein 1 Alternative name(s): 47 kDa actin-binding protein 52 kDa phosphoprotein Short name= pp52 Lymphocyte-specific antigen WP34
Expression Region	1-339aa
Notes	Repeated freezing and thawing is not recommended. Store working aliquots at 4°C for up to one week.
Tag Info	N-terminal GST-tagged
Mol. Weight	64.2kDa
Protein Description	Full Length of BC001785
Image	



(Tris-Glycine gel) Discontinuous SDS-PAGE (reduced) with 5% enrichment gel and 15% separation gel.



Based on the SEQUEST from database of E.coli host and target protein, the LC-MS/MS Analysis result of CSB-EP013214HU could indicate that this peptide derived from E.coli-expressed Homo sapiens (Human) LSP1.



Based on the SEQUEST from database of E.coli host and target protein, the LC-MS/MS Analysis result of CSB-EP013214HU could indicate that this peptide derived from E.coli-expressed Homo sapiens (Human) LSP1.

Reconstitution

We recommend that this vial be briefly centrifuged prior to opening to bring the contents to the bottom. Please reconstitute protein in deionized sterile water to a concentration of 0.1-1.0 mg/mL. We recommend to add 5-50% of glycerol (final concentration) and aliquot for long-term storage at -20°C/-80°C. Our default final concentration of glycerol is 50%. Customers could use it as reference.