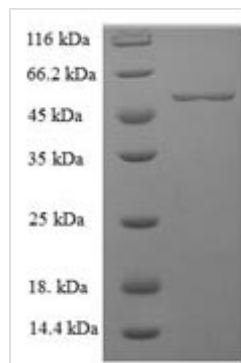




Recombinant Human Lactadherin (MFGE8)

Product Code	CSB-EP013752HU
Relevance	Plays an important role in the maintenance of intestinal epithelial homeostasis and the promotion of mucosal healing. Promotes VEGF-dependent neovascularization . Contributes to phagocytic roval of apoptotic cells in many tissues. Specific ligand for the alpha-v/beta-3 and alpha-v/beta-5 receptors. Also binds to phosphatidylserine-enriched cell surfaces in a receptor-independent manner. Zona pellucida-binding protein which may play a role in gamete interaction. Binds specifically to rotavirus and inhibits its replication.1 Publication
Storage	The shelf life is related to many factors, storage state, buffer ingredients, storage temperature and the stability of the protein itself. Generally, the shelf life of liquid form is 6 months at -20°C/-80°C. The shelf life of lyophilized form is 12 months at -20°C/-80°C.
Uniprot No.	Q08431
Alias	Breast epithelial antigen BA46HMFGMFGMMilk fat globule-EGF factor 8 ;MFG-E8SED1
Product Type	Recombinant Protein
Immunogen Species	Homo sapiens (Human)
Purity	Greater than 90% as determined by SDS-PAGE.
Sequence	LDICSKNPCHNGGLCEEISQEVRGDVFPSYTCTCLKGYAGNHCETKCVEPLG MENGNIANSQIAASSVRVTFLGLQHWVPELARLN RAGMVNAWTPSSNDDNP WIQVNLLRRMWVTGVVTQGASRLASHEYLKAFKVAYSLNGHEFDIFIHDVNKK HKEFVGNWNKNAVHVNLFETPVEAQYVRLYPTSCHTACTLRFELLGCELNGC ANPLGLKNN SIPDKQITASSSYKTWGLHLFSWNPSYARLDKQGNFNAWVAGS YGNDQWLQVDLGSSKEVTGIITQGARNFGSVQFVASYKVAYSND SANWTEYQ DPRTGSSKIFPGNWDN HSHKKNLFETPILARYVRILPVAWHNR IALRLELLGC
Lead Time	3-7 business days
Research Area	Cardiovascular
Source	E.coli
Gene Names	MFGE8
Expression Region	24-387aa
Notes	Repeated freezing and thawing is not recommended. Store working aliquots at 4°C for up to one week.
Tag Info	N-terminal 6xHis-SUMO-tagged
Mol. Weight	56.8kDa
Protein Description	Full Length of Mature Protein
Image	



(Tris-Glycine gel) Discontinuous SDS-PAGE (reduced) with 5% enrichment gel and 15% separation gel.

Description

Advance your cardiovascular research with our high-quality Recombinant Human MFGE8 protein. Lactadherin, also known as MFGE8, plays a vital role in various biological processes such as apoptotic cell clearance, regulation of inflammation, and vascular homeostasis. Its involvement in these processes makes MFGE8 an essential protein to study for understanding cardiovascular and inflammatory diseases.

Our Recombinant Human MFGE8 protein represents the full length of the mature protein (24-387 amino acids) and is expressed in *E. coli*, ensuring efficient and reliable production. The N-terminal 6xHis-SUMO-tag guarantees effective purification without compromising the protein's structure or function. With a purity of greater than 90% as determined by SDS-PAGE, our Recombinant Human MFGE8 protein provides the quality and consistency required for your cardiovascular research. Choose this exceptional protein to boost the success of your experiments and uncover new insights into cardiovascular biology.

Reconstitution

We recommend that this vial be briefly centrifuged prior to opening to bring the contents to the bottom. Please reconstitute protein in deionized sterile water to a concentration of 0.1-1.0 mg/mL. We recommend to add 5-50% of glycerol (final concentration) and aliquot for long-term storage at -20°C/-80°C. Our default final concentration of glycerol is 50%. Customers could use it as reference.