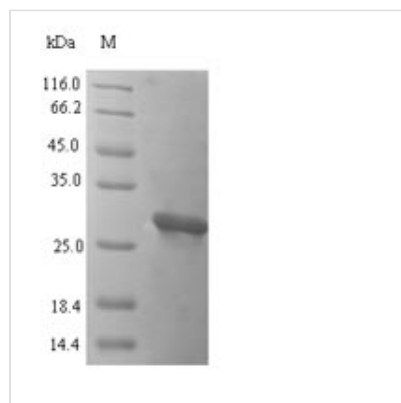




# Recombinant Mouse Oncomodulin (Ocm)

<b>Product Code</b>	CSB-EP016264MO
<b>Relevance</b>	Has some calmodulin-like activity with respect to enzyme activation and growth regulation. Binds two calcium ions.
<b>Storage</b>	The shelf life is related to many factors, storage state, buffer ingredients, storage temperature and the stability of the protein itself. Generally, the shelf life of liquid form is 6 months at -20°C/-80°C. The shelf life of lyophilized form is 12 months at -20°C/-80°C.
<b>Uniprot No.</b>	P51879
<b>Alias</b>	Parvalbumin beta
<b>Product Type</b>	Recombinant Protein
<b>Immunogen Species</b>	Mus musculus (Mouse)
<b>Purity</b>	Greater than 90% as determined by SDS-PAGE.
<b>Sequence</b>	SITDILSADDIAAALQECQDPDTFEPQKFFQTSGLSKMSASQLKDIFQFIDNDQS GYLDEDELKYFLQRFQSDARELTESETKSLMDAADNDGDGKIGADEFQEMVH S
<b>Lead Time</b>	3-7 business days
<b>Research Area</b>	Neuroscience
<b>Source</b>	E.coli
<b>Gene Names</b>	Ocm
<b>Expression Region</b>	2-109aa
<b>Notes</b>	Repeated freezing and thawing is not recommended. Store working aliquots at 4°C for up to one week.
<b>Tag Info</b>	N-terminal 6xHis-SUMO-tagged
<b>Mol. Weight</b>	28.1kDa
<b>Protein Description</b>	Full Length of Mature Protein

## Image



(Tris-Glycine gel) Discontinuous SDS-PAGE (reduced) with 5% enrichment gel and 15% separation gel.



---

## Description

The Recombinant Mouse Ocm is a synthetic version of the mouse Oncomodulin protein, also known as OM or Parvalbumin beta. This vital protein, pivotal in the field of Neuroscience, is reproduced faithfully in our state-of-the-art facilities to ensure accurate experimental outcomes.

The Recombinant Mouse Ocm features the full length of the mature protein, spanning from the 2nd to the 109th amino acid, closely mimicking the natural protein's structure and function. This product is expressed in *E. coli* and possesses an N-terminal 6xHis-SUMO tag, assisting in effortless purification and detection procedures. The purity level of this protein is more than 90%, as determined by SDS-PAGE, making it a reliable choice for your scientific research. The protein is offered in either a liquid form or a lyophilized powder to suit your specific requirements.

---

## Reconstitution

We recommend that this vial be briefly centrifuged prior to opening to bring the contents to the bottom. Please reconstitute protein in deionized sterile water to a concentration of 0.1-1.0 mg/mL. We recommend to add 5-50% of glycerol (final concentration) and aliquot for long-term storage at -20°C/-80°C. Our default final concentration of glycerol is 50%. Customers could use it as reference.