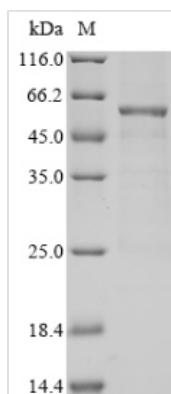




Recombinant Human Pyruvate dehydrogenase protein X component, mitochondrial (PDHX)

Product Code	CSB-EP017718HUa0
Storage	The shelf life is related to many factors, storage state, buffer ingredients, storage temperature and the stability of the protein itself. Generally, the shelf life of liquid form is 6 months at -20°C/-80°C. The shelf life of lyophilized form is 12 months at -20°C/-80°C.
Uniprot No.	O00330
Form	Liquid or Lyophilized powder
Storage Buffer	If the delivery form is liquid, the default storage buffer is Tris/PBS-based buffer, 5%-50% glycerol. If the delivery form is lyophilized powder, the buffer before lyophilization is Tris/PBS-based buffer, 6% Trehalose.
Product Type	Recombinant Protein
Immunogen Species	Homo sapiens (Human)
Purity	Greater than 85% as determined by SDS-PAGE.
Sequence	GDPIKILMPSLSPTMEEGNIVKWLKKEGEAVSAGDALCEIETDKAVVTLDASDD GILAKIVVEEGSKNIRLGSLIGLIVEEGEDWKHVEIPKDVGPPPPVSKPSEPRPS PEPQISIPVKKEHIPGTLRFRLSPAARNILEKHSLDASQGTATGPRGIFTKEDAL KLVQLKQTGKITESRPTAPTATPTAPSPLQATAGPSYPRPVIPPVSTPGQPNA VGTFTFEPASNIRRVIAKRLTESKSTVPHAYATADCDLGAVLKVRQDLVKDDIKV SVNDFIIKAAAVTLKQMPDVNVSWDGE GPKQLPFIDISVAVATDKGLLTPIIKDA AAKGIQEIADSVKALSKKARDGKLLPEEYQGGSFISISNLGMFGIDEFTAVINPPQ ACILAVGRFRPVCLKLTEDEEGNAKLQQRQLITVTMSSDSRVVDDELATRFLKSF KANLENPIRLA
Lead Time	3-7 business days
Research Area	Cancer
Source	E.coli
Gene Names	PDHX
Expression Region	54-501aa
Notes	Repeated freezing and thawing is not recommended. Store working aliquots at 4°C for up to one week.
Tag Info	N-terminal 6xHis-tagged
Mol. Weight	52.1 kDa
Protein Description	Full Length of Mature Protein
Image	



(Tris-Glycine gel) Discontinuous SDS-PAGE (reduced) with 5% enrichment gel and 15% separation gel.

Reconstitution

We recommend that this vial be briefly centrifuged prior to opening to bring the contents to the bottom. Please reconstitute protein in deionized sterile water to a concentration of 0.1-1.0 mg/mL. We recommend to add 5-50% of glycerol (final concentration) and aliquot for long-term storage at -20°C/-80°C. Our default final concentration of glycerol is 50%. Customers could use it as reference.