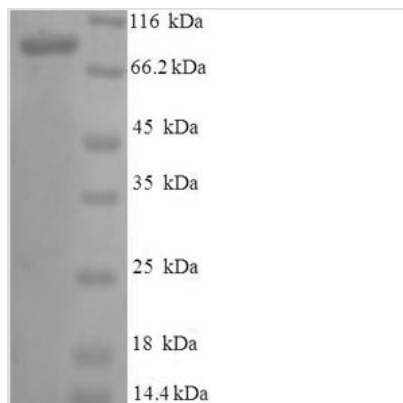




Recombinant Human Vitamin K-dependent protein S (PROS1)

Product Code	CSB-EP018754HU
Relevance	Anticoagulant plasma protein; it is a cofactor to activated protein C in the degradation of coagulation factors Va and VIIIa. It helps to prevent coagulation and stimulating fibrinolysis.
Storage	The shelf life is related to many factors, storage state, buffer ingredients, storage temperature and the stability of the protein itself. Generally, the shelf life of liquid form is 6 months at -20°C/-80°C. The shelf life of lyophilized form is 12 months at -20°C/-80°C.
Uniprot No.	P07225
Product Type	Recombinant Protein
Immunogen Species	Homo sapiens (Human)
Purity	Greater than 90% as determined by SDS-PAGE.
Sequence	<p>ANSLLEETKQGNLERECIEELCNKEEAREVFENDPETDYFYPKYLVLCLRSFQT GLFTAARQSTNAYPDLRSCVNAIPDQCSPLPCNEDGYMSCKD GKASFTCTCK PGWQGEKCEFDINECKDPSNINGGCSQICDNTPGSYHCCKNGFVMLSNNKKD CKDVDECSLKPSICGTAVCKNIPGDFECECPEGYRYNLKSKSCEDIDECSENM CAQLCVNYPGGYTCYCDGKKGFKLAQDQKSCEVVSVCPLPLNLDTKYELLYLA EQFAGVVLYLKFRLPEISRFSAEFDFRTYDSEGVILYAESIDHSAWLLIALRGGKI EVQLKNEHTSKITTGGDVINNGLWNMVSVEELEHSISIKIAKEAVMDINKPGPLF KPENGLLETKVYFAGFPRKVESELIPINPRLDGCIRSWNLMKQGASGIKEIIQE KQNKHCLVTVEKGSYYPGSGIAQFHIDYNNVSSAEGWHVNVTLNIRPSTGTGV MLALVSGNNTVPFAVSLVDSTSEKSQDILLSVENTVIYRIQALS L CSDQQSHLEF RVNRRNLELSTPLKIETISHEDLQRQLAVLDKAMKAKVATYLGGLPDVPFSATP VNAFYNGCMEVNINGVQLDLDEAISKHNDIRAHSCPSVWKKTKNS</p>
Lead Time	3-7 business days
Research Area	Cardiovascular
Source	E.coli
Gene Names	PROS1
Expression Region	42-676aa
Notes	Repeated freezing and thawing is not recommended. Store working aliquots at 4°C for up to one week.
Tag Info	N-terminal 6xHis-SUMO-tagged
Mol. Weight	86.6kDa
Protein Description	Full Length of Mature Protein
Image	



(Tris-Glycine gel) Discontinuous SDS-PAGE (reduced) with 5% enrichment gel and 15% separation gel.

Description

Discover our Recombinant Human PROS1 protein, meticulously designed to support your cardiovascular research needs. This full-length, mature Vitamin K-dependent protein S is expressed in an E. coli system, covering the 42-676aa region for optimal performance in your experiments.

Featuring an N-terminal 6xHis-SUMO tag, this protein allows for efficient purification and detection processes. Our Recombinant Human PROS1 protein boasts a purity greater than 90% as determined by SDS-PAGE, and is available in both liquid and lyophilized powder forms to meet your specific research requirements. Trust our precision-engineered PROS1 protein to deliver consistent, dependable results for your cardiovascular studies.

Reconstitution

We recommend that this vial be briefly centrifuged prior to opening to bring the contents to the bottom. Please reconstitute protein in deionized sterile water to a concentration of 0.1-1.0 mg/mL. We recommend to add 5-50% of glycerol (final concentration) and aliquot for long-term storage at -20°C/-80°C. Our default final concentration of glycerol is 50%. Customers could use it as reference.