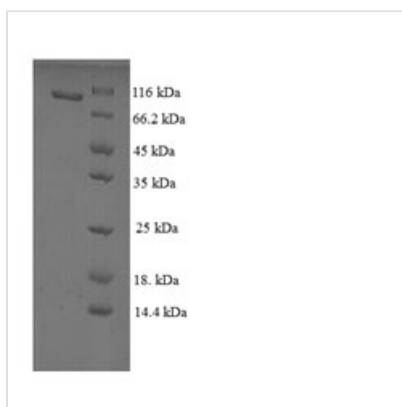




Recombinant Rat Vitamin K-dependent protein S (Pros1)

Product Code	CSB-EP018754RA
Relevance	Anticoagulant plasma protein; it is a cofactor to activated protein C in the degradation of coagulation factors Va and VIIIa. It helps to prevent coagulation and stimulating fibrinolysis.
Storage	The shelf life is related to many factors, storage state, buffer ingredients, storage temperature and the stability of the protein itself. Generally, the shelf life of liquid form is 6 months at -20°C/-80°C. The shelf life of lyophilized form is 12 months at -20°C/-80°C.
Uniprot No.	P53813
Product Type	Recombinant Protein
Immunogen Species	Rattus norvegicus (Rat)
Purity	Greater than 90% as determined by SDS-PAGE.
Sequence	ANTLLEETKKGNLERECIEELCNKEEAREVFENNPE TDYFY PKYLGCLGA FRV GAFSAARQSANAYPDLRSCVNAIPDQC DPMPCNEDGYLSCKDGGQGAFTCICK PGWQGD KCQFDINECKDPSNINGGCSQTC DNTPGSYHC SCKIGFAMLTNKKD CKDVDECSLKPSVCGTAVCKNIPGDFECECPNGYRYDPSSKSCKDVDECSEN TCAQLCVNYPGGYSCYCDGKKGFKLAQDQRSCEGIPVCLSLDL DKNYELLYLA EQFAGVVLYLKFRLPDITRFSAEFDFRTYDSEGIILYAESLDHSNWLLIALREGKI EVQFKNEFSTQITTGGNVINNGIWNMVSVEELDDSVSIKIAKEAVMNINKLGS LF KPTDGF LDTKIYFAGLPRKVESALIKPINPRLDGCIRGWNLMKQGALGAKEIVE GKQNKHCFLTVEKGSYYPGSGIAQFSIDYNNVTNAEGWQINVT LNIRPSTGTG VMLALVSGDTPFALSLVDSGSGTSQDILVFVENSVA AHLEAITLCSEQPSQLK CNINRNGLELWTPVRKDVISKDLQRQLAILDKTMKGT VATYLG GVPDISFSAT PVNAFYSGCMEVNINGVQLDLDEAISKHNDIRAHSCPSVRKIQKNF
Lead Time	Delivery time may differ from different purchasing way or location, please kindly consult your local distributors for specific delivery time.
Research Area	Others
Source	E.coli
Gene Names	Pros1
Expression Region	42-675aa
Notes	Repeated freezing and thawing is not recommended. Store working aliquots at 4°C for up to one week.
Tag Info	N-terminal GST-tagged
Mol. Weight	96.9kDa
Protein Description	Full Length of Mature Protein
Image	



(Tris-Glycine gel) Discontinuous SDS-PAGE (reduced) with 5% enrichment gel and 15% separation gel.

Reconstitution

We recommend that this vial be briefly centrifuged prior to opening to bring the contents to the bottom. Please reconstitute protein in deionized sterile water to a concentration of 0.1-1.0 mg/mL. We recommend to add 5-50% of glycerol (final concentration) and aliquot for long-term storage at -20°C/-80°C. Our default final concentration of glycerol is 50%. Customers could use it as reference.