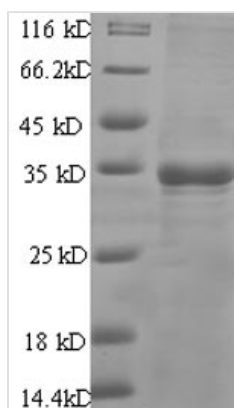




Recombinant Human Prostate stem cell antigen (PSCA)

Product Code	CSB-EP018840HU
Relevance	May be involved in the regulation of cell proliferation. Has a cell-proliferation inhibition activity in vitro.
Storage	The shelf life is related to many factors, storage state, buffer ingredients, storage temperature and the stability of the protein itself. Generally, the shelf life of liquid form is 6 months at -20°C/-80°C. The shelf life of lyophilized form is 12 months at -20°C/-80°C.
Uniprot No.	O43653
Product Type	Recombinant Protein
Immunogen Species	Homo sapiens (Human)
Purity	Greater than 90% as determined by SDS-PAGE.
Sequence	LLCYSCKAQVSNEDCLQVENCTQLGECWTARIRAVGLLTVISKGCSLNCVDD SQDYVVGKKNITCCDIDLNAS
Lead Time	3-7 business days
Research Area	Cancer
Source	E.coli
Gene Names	PSCA
Expression Region	12-86 aa
Notes	Repeated freezing and thawing is not recommended. Store working aliquots at 4°C for up to one week.
Tag Info	N-terminal GST-tagged
Mol. Weight	35.7kDa
Protein Description	Full Length of Mature Protein

Image



(Tris-Glycine gel) Discontinuous SDS-PAGE (reduced) with 5% enrichment gel and 15% separation gel.



Description

This Recombinant Human Prostate Stem Cell Antigen (PSCA) protein is developed to support your cancer research projects. PSCA, a cell surface glycoprotein, is overexpressed in various malignancies, including prostate and pancreatic cancers. As a result, it has emerged as a promising target for cancer diagnostics and therapy development.

Our Recombinant Human PSCA protein is expressed in *E. coli*, ensuring a reliable and efficient production process. The protein features the full-length mature sequence (12-86aa) and is fused with an N-terminal GST-tag for easy purification and detection. With a purity of greater than 90% as determined by SDS-PAGE, you can expect consistent performance in your experiments. Available in both liquid and lyophilized powder forms, our Recombinant Human PSCA protein is designed to meet the diverse needs of your cancer research endeavors.

Reconstitution

We recommend that this vial be briefly centrifuged prior to opening to bring the contents to the bottom. Please reconstitute protein in deionized sterile water to a concentration of 0.1-1.0 mg/mL. We recommend to add 5-50% of glycerol (final concentration) and aliquot for long-term storage at -20°C/-80°C. Our default final concentration of glycerol is 50%. Customers could use it as reference.