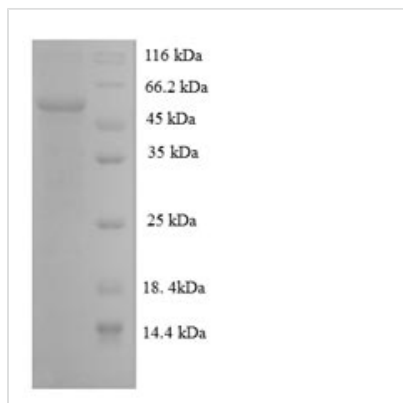




Recombinant Rat Regucalcin (Rgn)

| | |
|----------------------------|--|
| Product Code | CSB-EP019630RA |
| Relevance | Gluconolactonase with low activity towards other sugar lactones, including gulonolactone and galactonolactone. Catalyzes a key step in ascorbic acid (vitamin C) biosynthesis. Can also hydrolyze diisopropyl phosphorofluoridate and phenylacetate (in vitro). Calcium-binding protein. Modulates Ca ²⁺ signaling, and Ca ²⁺ -dependent cellular processes and enzyme activities. |
| Storage | The shelf life is related to many factors, storage state, buffer ingredients, storage temperature and the stability of the protein itself. Generally, the shelf life of liquid form is 6 months at -20°C/-80°C. The shelf life of lyophilized form is 12 months at -20°C/-80°C. |
| Uniprot No. | Q03336 |
| Alias | Gluconolactonase (EC:3.1.1.17) Short name: GNL Senescence marker protein 30 Short name: SMP-30 |
| Product Type | Recombinant Protein |
| Immunogen Species | Rattus norvegicus (Rat) |
| Purity | Greater than 90% as determined by SDS-PAGE. |
| Sequence | MSSIKIECVLRENYRCGESPVWEEASKCLLFVDIPSKTVCRWDSISNRVQRVG VDAPVSSVALRQSGGYVATIGTKFCALNWEDQSVFILAMVDEDKKNRNFNDG KVDPAGRYFAGTMAEETAPAVLERHQGSLYSLFPDHSVKKYFDQVDISNGLD WLDHKIFYIDSLSYTVDAFDYDLPTGQISNRRTVYKMEKDEQIPDGMCIDVE GKLWVACYNGGRVIRLDPETGKRLQTVKLPVDKTTSCCFGGKDYSEMYVTCA RDGMSAEGLLRQPDAGNIFKITGLGVKGIAPYSYAG |
| Lead Time | Delivery time may differ from different purchasing way or location, please kindly consult your local distributors for specific delivery time. |
| Research Area | Others |
| Source | E.coli |
| Gene Names | Rgn |
| Protein Names | Recommended name: Regucalcin Short name= RC Alternative name(s): Gluconolactonase Short name= GNL EC= 3.1.1.17 Senescence marker protein 30 Short name= SMP-30 |
| Expression Region | 1-299aa |
| Notes | Repeated freezing and thawing is not recommended. Store working aliquots at 4°C for up to one week. |
| Tag Info | N-terminal 6xHis-SUMO-tagged |
| Mol. Weight | 49.4kDa |
| Protein Description | Full Length |
| Image | |



(Tris-Glycine gel) Discontinuous SDS-PAGE (reduced) with 5% enrichment gel and 15% separation gel.

Reconstitution

We recommend that this vial be briefly centrifuged prior to opening to bring the contents to the bottom. Please reconstitute protein in deionized sterile water to a concentration of 0.1-1.0 mg/mL. We recommend to add 5-50% of glycerol (final concentration) and aliquot for long-term storage at -20°C/-80°C. Our default final concentration of glycerol is 50%. Customers could use it as reference.