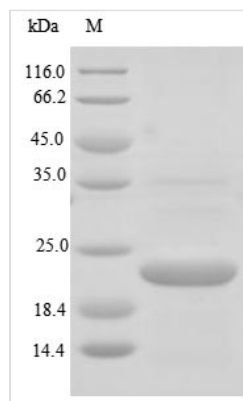




Recombinant Human Ribonuclease 4 (RNASE4)

| | |
|----------------------------|---------------------------------------------------------------------------------------------------------------------------------------------------------------------------------------------------------------------------------------------------------------------------------|
| Product Code | CSB-EP019796HU |
| Relevance | This RNase has marked specificity towards the 3' side of uridine nucleotides. |
| Storage | The shelf life is related to many factors, storage state, buffer ingredients, storage temperature and the stability of the protein itself. Generally, the shelf life of liquid form is 6 months at -20°C/-80°C. The shelf life of lyophilized form is 12 months at -20°C/-80°C. |
| Uniprot No. | P34096 |
| Product Type | Recombinant Protein |
| Immunogen Species | Homo sapiens (Human) |
| Purity | Greater than 85% as determined by SDS-PAGE. |
| Sequence | QDGM YQRFLRQH VHP EETGGSDRYCNLMMQRRKMTLYHCKRFNTFIHEDIW NIRSICSTTNIQCKNGKMNCHEGVVKVTD CRDTGSSRAPNCRYRAIASTRRVVI ACEGNPQVPVHFDG |
| Lead Time | Delivery time may differ from different purchasing way or location, please kindly consult your local distributors for specific delivery time. |
| Research Area | Cardiovascular |
| Source | E.coli |
| Gene Names | RNASE4 |
| Protein Names | RNS4 |
| Expression Region | 29-147aa |
| Notes | Repeated freezing and thawing is not recommended. Store working aliquots at 4°C for up to one week. |
| Tag Info | N-terminal 10xHis-tagged and C-terminal Myc-tagged |
| Mol. Weight | 20.8 kDa |
| Protein Description | Full Length of Mature Protein |

Image



(Tris-Glycine gel) Discontinuous SDS-PAGE (reduced) with 5% enrichment gel and 15% separation gel.



Reconstitution

We recommend that this vial be briefly centrifuged prior to opening to bring the contents to the bottom. Please reconstitute protein in deionized sterile water to a concentration of 0.1-1.0 mg/mL. We recommend to add 5-50% of glycerol (final concentration) and aliquot for long-term storage at -20°C/-80°C. Our default final concentration of glycerol is 50%. Customers could use it as reference.