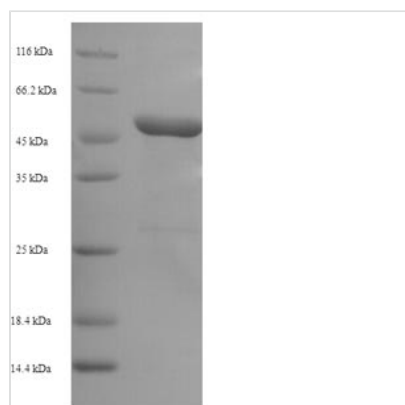




Recombinant Rat Plasminogen activator inhibitor 1 (Serpine1)

Product Code	CSB-EP021081RA
Relevance	Serine protease inhibitor. This inhibitor acts as 'bait' for tissue plasminogen activator, urokinase, protein C and matriptase-3/TMPRSS7. Its rapid interaction with PLAT may function as a major control point in the regulation of fibrinolysis .
Storage	The shelf life is related to many factors, storage state, buffer ingredients, storage temperature and the stability of the protein itself. Generally, the shelf life of liquid form is 6 months at -20°C/-80°C. The shelf life of lyophilized form is 12 months at -20°C/-80°C.
Uniprot No.	P20961
Alias	Endothelial plasminogen activator inhibitorSerpine E1
Product Type	Recombinant Protein
Immunogen Species	Rattus norvegicus (Rat)
Purity	Greater than 90% as determined by SDS-PAGE.
Sequence	SPLPESHTAQQATNFGVKVFQHVQASKDRNVVFSYGVSSVLAMLQLTTAG KTRQQIQDAMGFNISERGTAPALRKLSKELMGSWNKNEISTADAIFVQRDLELV QGFMPPHFFKLFRTTVKQVDFSEVERARFIINDWVERHTKGMISDLLAKGAVNE LTRLVLVNALYFNGQWKTPFLEASTHQRLFHKSDGSTISVPMMAQNNKFNYTE FTTPDGHEYDILELPYHGETLSMFIAAPFEKDVPLSAITNILDALIRQWKSNT RLPRLLILPKFSLETEVDLRGPLEKLGMTDIFSSTQADFTSLSDQEQLSVAQAL QKVKIEVNESGTVASSSTAILVSARMAPTEMVLDRSFLFVVRHNPTETILFMGQ LMEP
Lead Time	3-7 business days
Research Area	Others
Source	E.coli
Gene Names	Serpine1
Protein Names	Recommended name: Plasminogen activator inhibitor 1 Short name= PAI Short name= PAI-1 Alternative name(s): Endothelial plasminogen activator inhibitor Serpin E1
Expression Region	24-402aa
Notes	Repeated freezing and thawing is not recommended. Store working aliquots at 4°C for up to one week.
Tag Info	N-terminal 6xHis-SUMO-tagged
Mol. Weight	58.6kDa
Protein Description	Full Length of Mature Protein
Image	



(Tris-Glycine gel) Discontinuous SDS-PAGE (reduced) with 5% enrichment gel and 15% separation gel.

Reconstitution

We recommend that this vial be briefly centrifuged prior to opening to bring the contents to the bottom. Please reconstitute protein in deionized sterile water to a concentration of 0.1-1.0 mg/mL. We recommend to add 5-50% of glycerol (final concentration) and aliquot for long-term storage at -20°C/-80°C. Our default final concentration of glycerol is 50%. Customers could use it as reference.