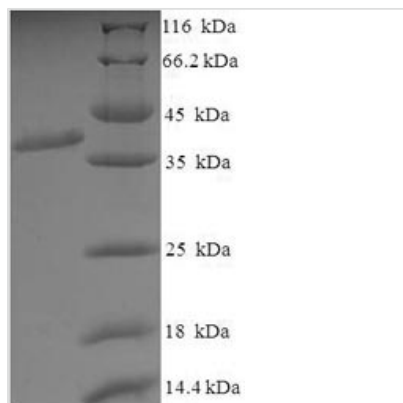




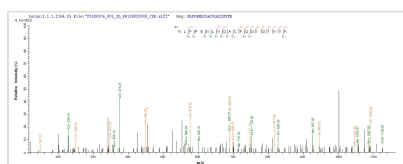
Recombinant Mouse Excitatory amino acid transporter 2 (Slc1a2), partial

Product Code	CSB-EP021433MO
Relevance	Transports L-glutamate and also L- and D-aspartate. Essential for terminating the postsynaptic action of glutamate by rapidly roving released glutamate from the synaptic cleft. Acts as a symport by cotransporting sodium.
Storage	The shelf life is related to many factors, storage state, buffer ingredients, storage temperature and the stability of the protein itself. Generally, the shelf life of liquid form is 6 months at -20°C/-80°C. The shelf life of lyophilized form is 12 months at -20°C/-80°C.
Uniprot No.	P43006
Alias	GLT-1Sodium-dependent glutamate/aspartate transporter 2Solute carrier family 1 member 2
Product Type	Recombinant Protein
Immunogen Species	Mus musculus (Mouse)
Purity	Greater than 90% as determined by SDS-PAGE.
Sequence	HPGNPKLKKQLGPGKKNDEVSSLDALDLIRNLFPENLVQACFQQIQTVTKKVL VAPPSEEANTTKAVISMLNETMNEAPEETKIVIKKGGLEFKDG
Lead Time	Delivery time may differ from different purchasing way or location, please kindly consult your local distributors for specific delivery time.
Source	E.coli
Gene Names	Slc1a2
Expression Region	143-238aa
Notes	Repeated freezing and thawing is not recommended. Store working aliquots at 4°C for up to one week.
Tag Info	N-terminal GST-tagged
Mol. Weight	37.6kDa
Protein Description	partial

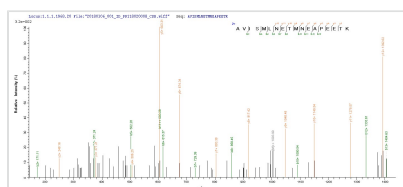
Image



(Tris-Glycine gel) Discontinuous SDS-PAGE (reduced) with 5% enrichment gel and 15% separation gel.



Based on the SEQUEST from database of E.coli host and target protein, the LC-MS/MS Analysis result of CSB-EP021433MO could indicate that this peptide derived from E.coli-expressed Mus musculus (Mouse) Slc1a2.



Based on the SEQUEST from database of E.coli host and target protein, the LC-MS/MS Analysis result of CSB-EP021433MO could indicate that this peptide derived from E.coli-expressed Mus musculus (Mouse) Slc1a2.

Reconstitution

We recommend that this vial be briefly centrifuged prior to opening to bring the contents to the bottom. Please reconstitute protein in deionized sterile water to a concentration of 0.1-1.0 mg/mL. We recommend to add 5-50% of glycerol (final concentration) and aliquot for long-term storage at -20°C/-80°C. Our default final concentration of glycerol is 50%. Customers could use it as reference.