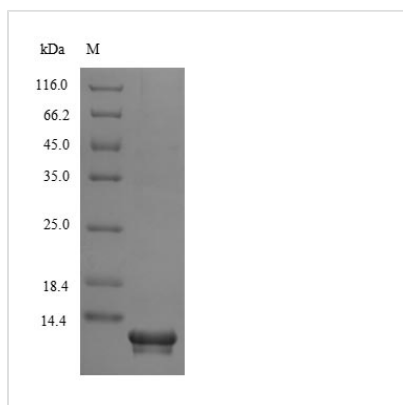




Recombinant Human Secreted Ly-6/uPAR-related protein 1 (SLURP1)

Product Code	CSB-EP021784HUe1
Relevance	Has an antitumor activity. Was found to be a marker of late differentiation of the skin. Implicated in maintaining the physiological and structural integrity of the keratinocyte layers of the skin. In vitro down-regulates keratinocyte proliferation; the function may involve the proposed role as modulator of nicotinic acetylcholine receptors (nAChRs) activity. In vitro inhibits alpha-7-dependent nAChR currents in an allosteric manner. In T cells may be involved in regulation of intracellular Ca ²⁺ signaling. Seems to have a immunomodulatory function in the cornea. The function may implicate a possible role as a scavenger receptor for PLAUI thereby blocking PLAUI-dependent functions of PLAUI such as in cell migration and proliferation
Storage	The shelf life is related to many factors, storage state, buffer ingredients, storage temperature and the stability of the protein itself. Generally, the shelf life of liquid form is 6 months at -20°C/-80°C. The shelf life of lyophilized form is 12 months at -20°C/-80°C.
Uniprot No.	P55000
Product Type	Recombinant Protein
Immunogen Species	Homo sapiens (Human)
Purity	Greater than 85% as determined by SDS-PAGE.
Sequence	LKCYTCKEPMTSASCRTITRCKPEDTACMTTLVTVEAEYPFNQSPVVTRSCSS SCVATDPDSIGAAHLIFCCFRDLCNSEL
Lead Time	Delivery time may differ from different purchasing way or location, please kindly consult your local distributors for specific delivery time.
Research Area	Cardiovascular
Source	E.coli
Gene Names	SLURP1
Protein Names	ARS component B ARS(component B)-81/S Anti-neoplastic urinary protein
Expression Region	23-103aa
Notes	Repeated freezing and thawing is not recommended. Store working aliquots at 4°C for up to one week.
Tag Info	Tag-Free
Mol. Weight	8.9 kDa
Protein Description	Full Length of Mature Protein
Image	



(Tris-Glycine gel) Discontinuous SDS-PAGE (reduced) with 5% enrichment gel and 15% separation gel.

Reconstitution

We recommend that this vial be briefly centrifuged prior to opening to bring the contents to the bottom. Please reconstitute protein in deionized sterile water to a concentration of 0.1-1.0 mg/mL. We recommend to add 5-50% of glycerol (final concentration) and aliquot for long-term storage at -20°C/-80°C. Our default final concentration of glycerol is 50%. Customers could use it as reference.