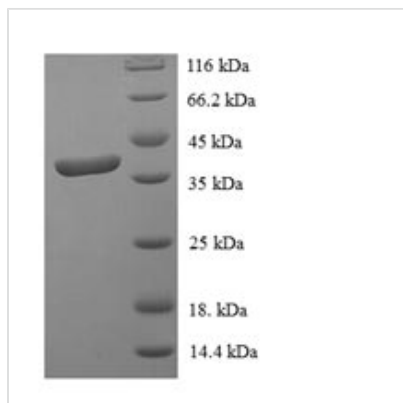


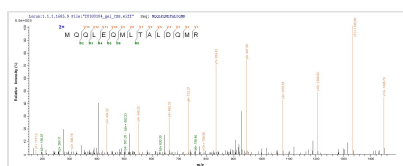


# Recombinant Human Signal transducer and activator of transcription 3 (STAT3), partial

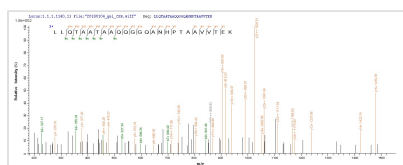
|                            |  |
|----------------------------|--|
| <b>Product Code</b>        | CSB-EP022812HU   |
| <b>Relevance</b>           | Signal transducer and transcription activator that mediates cellular responses to interleukins, KITLG/SCF and other growth factors. May mediate cellular responses to activated FGFR1, FGFR2, FGFR3 and FGFR4. Binds to the interleukin-6 (IL-6)-responsive elements identified in the promoters of various acute-phase protein genes. Activated by IL31 through IL31RA. Cytoplasmic domain STAT3 represses macroautophagy by inhibiting EIF2AK2/PKR activity. Plays an important role in host defense in methicillin-resistant S.aureus lung infection by regulating the expression of the antimicrobial lectin REG3G . |
| <b>Storage</b>             | The shelf life is related to many factors, storage state, buffer ingredients, storage temperature and the stability of the protein itself. Generally, the shelf life of liquid form is 6 months at -20°C/-80°C. The shelf life of lyophilized form is 12 months at -20°C/-80°C.  |
| <b>Uniprot No.</b>         | P40763   |
| <b>Alias</b>               | Acute-phase response factor  |
| <b>Product Type</b>        | Recombinant Protein  |
| <b>Immunogen Species</b>   | Homo sapiens (Human)   |
| <b>Purity</b>              | Greater than 90% as determined by SDS-PAGE.  |
| <b>Sequence</b>            | ESHATLVFHNLLGEIDQQYSRFLQESNVLYQHNLRRIKQFLQSRYLEKPMIAR<br>IVARCLWEESRLLQTAATAAQGGQANHPTAAVVTEKQQMLEQHLQDVRKRV<br>QDLEQKMKVVENLQDDDFDFNYKTLKSQGDMQDLNGNNQSVTRQKMQQLEQ<br>MLTALDQMRRSIVSELAGLLSAMEYVQKTLTDEEL   |
| <b>Lead Time</b>           | 3-7 business days  |
| <b>Research Area</b>       | Immunology   |
| <b>Source</b>              | E.coli   |
| <b>Gene Names</b>          | STAT3  |
| <b>Expression Region</b>   | 50-240aa   |
| <b>Notes</b>               | Repeated freezing and thawing is not recommended. Store working aliquots at 4°C for up to one week.  |
| <b>Tag Info</b>            | N-terminal 6xHis-SUMO-tagged   |
| <b>Mol. Weight</b>         | 38.3kDa  |
| <b>Protein Description</b> | Partial  |
| <b>Image</b>               |  |



(Tris-Glycine gel) Discontinuous SDS-PAGE (reduced) with 5% enrichment gel and 15% separation gel.



Based on the SEQUEST from database of E.coli host and target protein, the LC-MS/MS Analysis result of CSB-EP022812HU could indicate that this peptide derived from E.coli-expressed Homo sapiens (Human) STAT3.



Based on the SEQUEST from database of E.coli host and target protein, the LC-MS/MS Analysis result of CSB-EP022812HU could indicate that this peptide derived from E.coli-expressed Homo sapiens (Human) STAT3.

## Description

Discover the power of our premium Recombinant Human STAT3 protein, a vital tool for researchers investigating the signal transducer and activator of transcription 3, also known as the acute-phase response factor. STAT3 is a key player in numerous cellular processes, including cell growth, apoptosis, and immune response, making it an essential target for scientific exploration across various research areas.

Our Recombinant Human STAT3 protein is expressed in E.coli, yielding a partial protein (50-240aa) that maintains native structure and function. With an N-terminal 6xHis-SUMO tag, this protein enables efficient purification and detection, ensuring consistent and reliable results for your research. The purity of our Recombinant Human STAT3 protein is greater than 90%, as determined by SDS-PAGE, providing you with the quality needed for your experiments. Choose between liquid and lyophilized powder formats to best suit your research requirements.

## Reconstitution

We recommend that this vial be briefly centrifuged prior to opening to bring the contents to the bottom. Please reconstitute protein in deionized sterile water to a concentration of 0.1-1.0 mg/mL. We recommend to add 5-50% of glycerol (final concentration) and aliquot for long-term storage at -20°C/-80°C. Our default final concentration of glycerol is 50%. Customers could use it as reference.