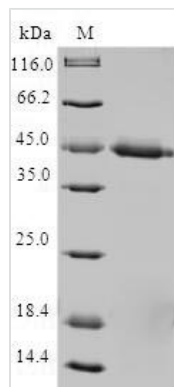




Recombinant Human Mitochondrial import inner membrane translocase subunit Tim17-A (TIMM17A)

Product Code	CSB-EP023550HU
Relevance	Essential component of the TIM23 complex, a complex that mediates the translocation of transit peptide-containing proteins across the mitochondrial inner membrane.
Storage	The shelf life is related to many factors, storage state, buffer ingredients, storage temperature and the stability of the protein itself. Generally, the shelf life of liquid form is 6 months at -20°C/-80°C. The shelf life of lyophilized form is 12 months at -20°C/-80°C.
Uniprot No.	Q99595
Alias	Inner membrane preprotein translocase Tim17a
Product Type	Recombinant Protein
Immunogen Species	Homo sapiens (Human)
Purity	Greater than 90% as determined by SDS-PAGE.
Sequence	MEEYAREPCPWRIVDDCGGAFTMGITGGGIFQAIKGFRNSPVGVNHLRGSL TAIKTRAPQLGGSAFVWGGFLFSMIDCSMVQVRGKEDPWNSITSGALTGAILAA RNGPVAMVGSAAAMGGILLALIEGAGILLTRFASAQFPNGPQFAEDPSQLPSTQ LPSSPFGDYRQYQ
Lead Time	Delivery time may differ from different purchasing way or location, please kindly consult your local distributors for specific delivery time.
Research Area	Signal Transduction
Source	E.coli
Gene Names	TIMM17A
Expression Region	1-171aa
Notes	Repeated freezing and thawing is not recommended. Store working aliquots at 4°C for up to one week.
Tag Info	N-terminal GST-tagged
Mol. Weight	45.0kDa
Protein Description	Full Length
Image	



(Tris-Glycine gel) Discontinuous SDS-PAGE (reduced) with 5% enrichment gel and 15% separation gel.

Reconstitution

We recommend that this vial be briefly centrifuged prior to opening to bring the contents to the bottom. Please reconstitute protein in deionized sterile water to a concentration of 0.1-1.0 mg/mL. We recommend to add 5-50% of glycerol (final concentration) and aliquot for long-term storage at -20°C/-80°C. Our default final concentration of glycerol is 50%. Customers could use it as reference.