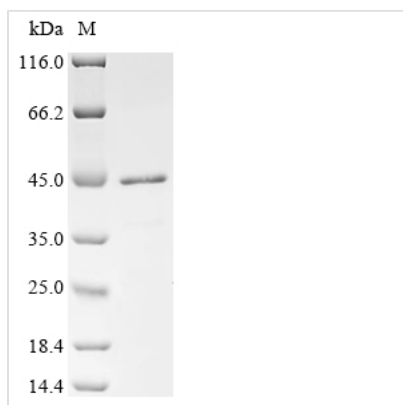




Recombinant Human Transcription cofactor vestigial-like protein 3 (VGLL3)

Product Code	CSB-EP025850HU
Storage	The shelf life is related to many factors, storage state, buffer ingredients, storage temperature and the stability of the protein itself. Generally, the shelf life of liquid form is 6 months at -20°C/-80°C. The shelf life of lyophilized form is 12 months at -20°C/-80°C.
Uniprot No.	A8MV65
Form	Liquid or Lyophilized powder
Storage Buffer	If the delivery form is liquid, the default storage buffer is Tris/PBS-based buffer, 5%-50% glycerol. If the delivery form is lyophilized powder, the buffer before lyophilization is Tris/PBS-based buffer, 6% Trehalose.
Product Type	Recombinant Human Transcription cofactor vestigial-like protein 3(VGLL3)
Immunogen Species	Homo sapiens (Human)
Sensitivity	Not Test
Purity	Greater than 85% as determined by SDS-PAGE.
Sequence	MSCAEVMYHPQPYGASQYLPNPMAATTCPTAYYQPAPQPGQQKKLAVFSKM QDSLEVTLP SKQEEED EEEEEEEK DQPAEMEYLNSRCVLFTYFQGDIGSVVDE HFSRALGQAITLHPESAISKSKMGLTPLWRDSSALSSQRNSFPTSFWTSSYQP PPAPCLGGVHPDFQVTGPPGTFSAADPSPWPGHNLHQTGPAPPPAVSESWP YPLTSQVSPSYSHMHDVYMRHHHPAHMHHRHRRHHHHHHHPPAGSALDPS YGPLLMPSVHAARIPAPQCDITKTEPTTVTSATSAWAGAFHGTVDIVPSVGFD T GWSAMARS
Lead Time	Delivery time may differ from different purchasing way or location, please kindly consult your local distributors for specific delivery time.
Research Area	Epigenetics and Nuclear Signaling
Source	E.coli
Gene Names	VGLL3
Expression Region	1-320aa
Notes	Repeated freezing and thawing is not recommended. Store working aliquots at 4? for up to one week.
Tag Info	N-terminal 6xHis-tagged
Mol. Weight	41.1 kDa
Protein Description	Full Length of Isoform 2
Image	



(Tris-Glycine gel) Discontinuous SDS-PAGE (reduced) with 5% enrichment gel and 15% separation gel.

Reconstitution

We recommend that this vial be briefly centrifuged prior to opening to bring the contents to the bottom. Please reconstitute protein in deionized sterile water to a concentration of 0.1-1.0 mg/mL. We recommend to add 5-50% of glycerol (final concentration) and aliquot for long-term storage at -20?/-80?. Our default final concentration of glycerol is 50%. Customers could use it as reference.