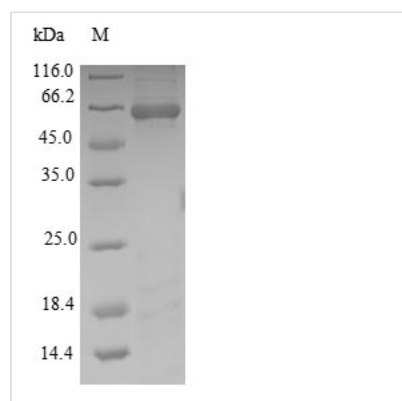




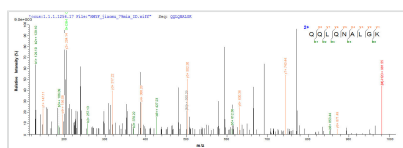
Recombinant Wuchereria bancrofti Putative serine protease inhibitor

Product Code	CSB-EP2118WBS
Storage	The shelf life is related to many factors, storage state, buffer ingredients, storage temperature and the stability of the protein itself. Generally, the shelf life of liquid form is 6 months at -20°C/-80°C. The shelf life of lyophilized form is 12 months at -20°C/-80°C.
Uniprot No.	F6KME1
Product Type	Recombinant Protein
Immunogen Species	Wuchereria bancrofti
Purity	Greater than 90% as determined by SDS-PAGE.
Sequence	ILGQISLTDRAQLDFAVNLLQNVAESDRSSILSPFSVSTSLFIAYLAADGETKQQ LQNALGKTASTSQFRIHFAKQLAYLARAESRNYTLNVANRFYVREEFSTKESF QRVLSFYFNEILYKFNFEQRNELVQEINDWVSNETNNKVTKMITENSITEDTRM LLMNAIHFKGTWTTQFIDFVTKQKQFHISENEVKLVPMMAKS DTPYYEDDVV KVIKLPYTGGEVEMVVILPKRRFGLSDVLKNLSGEKLLKYVNEAKNRTVSIRMP RFQVEEKRNLNNAALQAIGITDAFSGKADFGELLNNSIPISIGKIIHAGFIEVNEKG TESAAATLIELEDRMASSRNFNADPFLFAIVKDLKTVLFIGQFVK
Lead Time	3-7 business days
Research Area	others
Source	E.coli
Expression Region	1-371aa
Notes	Repeated freezing and thawing is not recommended. Store working aliquots at 4°C for up to one week.
Tag Info	N-terminal 10xHis-SUMO-tagged and C-terminal Myc-tagged
Mol. Weight	62.3kDa
Protein Description	Full Length

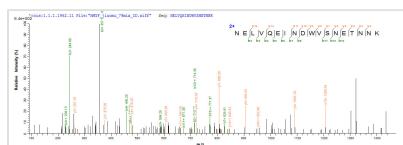
Image



(Tris-Glycine gel) Discontinuous SDS-PAGE (reduced) with 5% enrichment gel and 15% separation gel.



Based on the SEQUEST from database of E.coli host and target protein, the LC-MS/MS Analysis result of CSB-EP2118WBS could indicate that this peptide derived from E.coli-expressed *Wuchereria bancrofti* wb123.



Based on the SEQUEST from database of E.coli host and target protein, the LC-MS/MS Analysis result of CSB-EP2118WBS could indicate that this peptide derived from E.coli-expressed *Wuchereria bancrofti* wb123.

Reconstitution

We recommend that this vial be briefly centrifuged prior to opening to bring the contents to the bottom. Please reconstitute protein in deionized sterile water to a concentration of 0.1-1.0 mg/mL. We recommend to add 5-50% of glycerol (final concentration) and aliquot for long-term storage at -20°C/-80°C. Our default final concentration of glycerol is 50%. Customers could use it as reference.