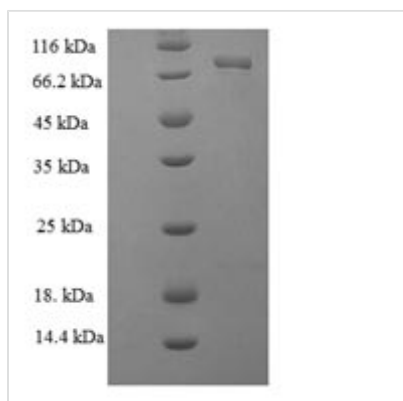




Recombinant Helicobacter pylori Glutamate--tRNA ligase 1 (gltX1)

Product Code	CSB-EP308728HUV
Relevance	Catalyzes the attachment of glutamate to tRNA(Glu) in a two-step reaction: glutamate is first activated by ATP to form Glu-AMP and then transferred to the acceptor end of tRNA(Glu).
Storage	The shelf life is related to many factors, storage state, buffer ingredients, storage temperature and the stability of the protein itself. Generally, the shelf life of liquid form is 6 months at -20°C/-80°C. The shelf life of lyophilized form is 12 months at -20°C/-80°C.
Uniprot No.	P96551
Alias	Glutamyl-tRNA synthetase 1
Product Type	Recombinant Protein
Immunogen Species	Helicobacter pylori (strain ATCC 700392 / 26695) (Campylobacter pylori)
Purity	Greater than 90% as determined by SDS-PAGE.
Sequence	MSLIVTRFAPSPTGYLHIGGLRTAIFNYLFARANQGKFFLRIEDTDLNRNSIEAA NAIEAFKWVGLEYDGEILYQSKRFEIYKEYIQKLLDEDKAYCYMSKEELDALR EEQKARKETPRYDNRYRDFKGTTPPKGIEPVVRIKVPQNEVIGFNDGVKGEVKV NTNELDDFIARSDGTPTYNFVVTIDDALMGITDVIRGDDHLSNTPKQIVLYKALN FKIPNFFHVPMILNEEGQKLSKRHGATNVMDYQEMGYLKEALVNFLARLGWSY QDKEVFSMQELLELPKDLNSSPSCFSWHKLNWLNHAHYLKNQSVQELLKLL KPFSDLSHLNPTQLDRLLDALKERSQTLKELALKIDEVLIAPVEYEEKVFKKL NQALVMPLEKFKLELNKANFNDESALENAMRQIIIEEEKIKAGSFMQPLRLALL GKGGGIGLKEALFILGKTESVKRIEDFLKN
Lead Time	Delivery time may differ from different purchasing way or location, please kindly consult your local distributors for specific delivery time.
Research Area	Others
Source	E.coli
Gene Names	gltX1
Expression Region	1-463aa
Notes	Repeated freezing and thawing is not recommended. Store working aliquots at 4°C for up to one week.
Tag Info	N-terminal 6xHis-SUMO-tagged
Mol. Weight	69.4kDa
Protein Description	Full Length
Image	



(Tris-Glycine gel) Discontinuous SDS-PAGE (reduced) with 5% enrichment gel and 15% separation gel.

Reconstitution

We recommend that this vial be briefly centrifuged prior to opening to bring the contents to the bottom. Please reconstitute protein in deionized sterile water to a concentration of 0.1-1.0 mg/mL. We recommend to add 5-50% of glycerol (final concentration) and aliquot for long-term storage at -20°C/-80°C. Our default final concentration of glycerol is 50%. Customers could use it as reference.