

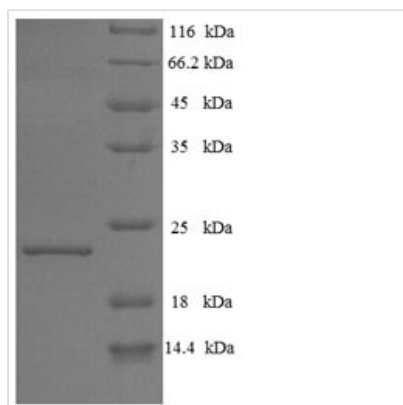


# Recombinant Bovine Interferon tau-1 (IFNT1)

<b>Product Code</b>	CSB-EP322795BO
<b>Relevance</b>	Paracrine hormone primarily responsible for maternal recognition of pregnancy. Interacts with endometrial receptors, probably type I interferon receptors, and blocks estrogen receptor expression, preventing the estrogen-induced increase in oxytocin receptor expression in the endometrium. This results in the suppression of the pulsatile endometrial release of the luteolytic hormone prostaglandin F2-alpha, hindering the regression of the corpus luteum (luteolysis) and therefore a return to ovarian cyclicity. This, and a possible direct effect of IFN-tau on prostaglandin synthesis, leads in turn to continued ovarian progesterone secretion, which stimulates the secretion by the endometrium of the nutrients required for the growth of the conceptus. In summary, displays particularly high antiviral and antiproliferative potency concurrently with particular weak cytotoxicity, high antiluteolytic activity and immunomodulatory properties. In contrast with other IFNs, IFN-tau is not virally inducible.
<b>Storage</b>	The shelf life is related to many factors, storage state, buffer ingredients, storage temperature and the stability of the protein itself. Generally, the shelf life of liquid form is 6 months at -20°C/-80°C. The shelf life of lyophilized form is 12 months at -20°C/-80°C.
<b>Uniprot No.</b>	P15696
<b>Alias</b>	Antiluteolysin;Trophoblast antiluteolytic protein;Trophoblast protein 1 ;TP-1Trophoblastin
<b>Product Type</b>	Recombinant Protein
<b>Immunogen Species</b>	Bos taurus (Bovine)
<b>Purity</b>	Greater than 90% as determined by SDS-PAGE.
<b>Sequence</b>	CYLSEDHMLGARENLRLLARMNRLSPHPCLQDRKDFGLPQEMVEGNQLQKD QAISVLHEMLQQCFNLFYTEHSSAAWNTTLLQLCTGLQQQLEDLDACLGPV MGEKDSMDGRMGPIILTVKKYFQGIHVYLKEKEYSDCAWEIIRVEMMRALSSST TLQKRLRKMGGDLNSL
<b>Lead Time</b>	3-7 business days
<b>Research Area</b>	Others
<b>Source</b>	E.coli
<b>Gene Names</b>	IFNT1
<b>Expression Region</b>	24-195aa
<b>Notes</b>	Repeated freezing and thawing is not recommended. Store working aliquots at 4°C for up to one week.
<b>Tag Info</b>	N-terminal 6xHis-tagged
<b>Mol. Weight</b>	23.8kDa
<b>Protein Description</b>	Full Length of Mature Protein



## Image



(Tris-Glycine gel) Discontinuous SDS-PAGE (reduced) with 5% enrichment gel and 15% separation gel.

## Reconstitution

We recommend that this vial be briefly centrifuged prior to opening to bring the contents to the bottom. Please reconstitute protein in deionized sterile water to a concentration of 0.1-1.0 mg/mL. We recommend to add 5-50% of glycerol (final concentration) and aliquot for long-term storage at -20°C/-80°C. Our default final concentration of glycerol is 50%. Customers could use it as reference.