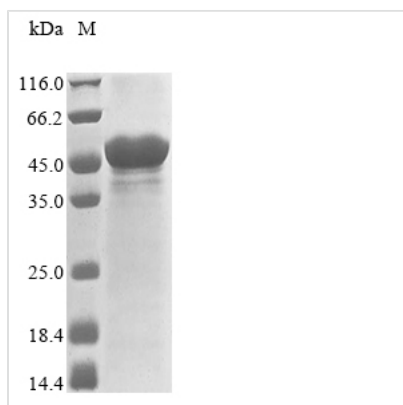




Recombinant Shigella flexneri Invasin ipaC (ipaC)

Product Code	CSB-EP324678SZB
Storage	The shelf life is related to many factors, storage state, buffer ingredients, storage temperature and the stability of the protein itself. Generally, the shelf life of liquid form is 6 months at -20°C/-80°C. The shelf life of lyophilized form is 12 months at -20°C/-80°C.
Uniprot No.	P18012
Form	Liquid or Lyophilized powder
Storage Buffer	If the delivery form is liquid, the default storage buffer is Tris/PBS-based buffer, 5%-50% glycerol. If the delivery form is lyophilized powder, the buffer before lyophilization is Tris/PBS-based buffer, 6% Trehalose.
Product Type	Recombinant Proteins
Immunogen Species	Shigella flexneri
Purity	Greater than 85% as determined by SDS-PAGE.
Sequence	MEIQNTKPTQTLYTDISTKQTQSSSETQKSQNYQQIAAHIPLNVGKNPVLTTTL NDDQLLKLSEQVQHDSEIIARLTDKMKDLSEMSHTLTPEPNTLDISSLSSNAVS LIISVAVLLSALRTAETKLGSQSLIAFDATKSAAENIVRQGLAALSSSITGAVTQ VGITGIGAKKTHSGISDQKGALRKNLATAQSLEKELAGSKLGLNKQIDTNITSPQ TNSSTKFLGKNKLAPDNISLSTEHKTSLSSPDISLQDKIDTQRRTYELNTLSAQQ KQNIGRATMETSAVAGNISTSGGRYASALEEEEEQLISQASSKQAEAEASQVSKE ASQATNQLIQKLLNIIDSINQSKNSAASQIAGNIRA
Lead Time	13-23 business days
Research Area	Others
Source	E.coli
Gene Names	ipaC
Protein Names	Recommended name: Invasin ipaC Alternative name(s): 42 kDa antigen
Expression Region	1-363aa
Notes	Repeated freezing and thawing is not recommended. Store working aliquots at 4°C for up to one week.
Tag Info	N-terminal 10xHis-tagged and C-terminal Myc-tagged
Mol. Weight	46.2 kDa
Protein Description	Full Length
Image	



(Tris-Glycine gel) Discontinuous SDS-PAGE (reduced) with 5% enrichment gel and 15% separation gel.

Reconstitution

We recommend that this vial be briefly centrifuged prior to opening to bring the contents to the bottom. Please reconstitute protein in deionized sterile water to a concentration of 0.1-1.0 mg/mL. We recommend to add 5-50% of glycerol (final concentration) and aliquot for long-term storage at -20°C/-80°C. Our default final concentration of glycerol is 50%. Customers could use it as reference.