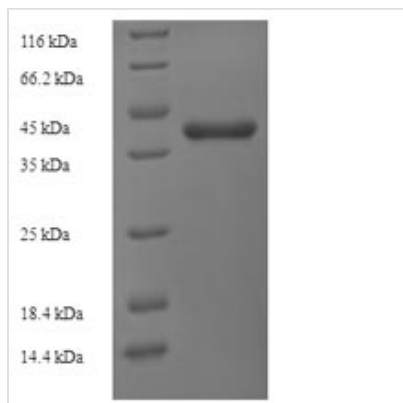




Recombinant Salmonella typhi 3-dehydroquinate dehydratase (aroD)

Product Code	CSB-EP326162SWW
Relevance	Involved in the third step of the chorismate pathway, which leads to the biosynthesis of aromatic amino acids. Catalyzes the cis-dehydration of 3-dehydroquinate (DHQ) and introduces the first double bond of the aromatic ring to yield 3-dehydroshikimate. The reaction involves the formation of an imine intermediate between the keto group of 3-dehydroquinate and the epsilon-amino group of Lys-170 at the active site.
Storage	The shelf life is related to many factors, storage state, buffer ingredients, storage temperature and the stability of the protein itself. Generally, the shelf life of liquid form is 6 months at -20°C/-80°C. The shelf life of lyophilized form is 12 months at -20°C/-80°C.
Uniprot No.	P24670
Alias	Type I DHQase
Product Type	Recombinant Protein
Immunogen Species	Salmonella typhi
Purity	Greater than 90% as determined by SDS-PAGE.
Sequence	MKTVTVKNLIIGEGMPKIIIVSLMGRDINSVKAEALAYREATFDILEWRVDHFMDI ASTQSVLTAARVIRDAMPDIPLLFTRSAKEGGEQTITTQHYLTNLRAAIDSGLV DMIDLELFTGDADV KATVDYAHAHNVYVVMNSHDFHQTPSAEEMVLRLRKM QALGADIPKIAVMPQSKHDVLTLLTATLEMQQHYADRPVITMSMAKEGVISRLAG EVFGSAATFGAVKQASAPGQIAVNDLRSVLMILHNA
Lead Time	Delivery time may differ from different purchasing way or location, please kindly consult your local distributors for specific delivery time.
Research Area	Others
Source	E.coli
Gene Names	aroD
Expression Region	1-252aa
Notes	Repeated freezing and thawing is not recommended. Store working aliquots at 4°C for up to one week.
Tag Info	N-terminal 6xHis-SUMO-tagged
Mol. Weight	43.6kDa
Protein Description	Full Length
Image	



(Tris-Glycine gel) Discontinuous SDS-PAGE (reduced) with 5% enrichment gel and 15% separation gel.

Reconstitution

We recommend that this vial be briefly centrifuged prior to opening to bring the contents to the bottom. Please reconstitute protein in deionized sterile water to a concentration of 0.1-1.0 mg/mL. We recommend to add 5-50% of glycerol (final concentration) and aliquot for long-term storage at -20°C/-80°C. Our default final concentration of glycerol is 50%. Customers could use it as reference.