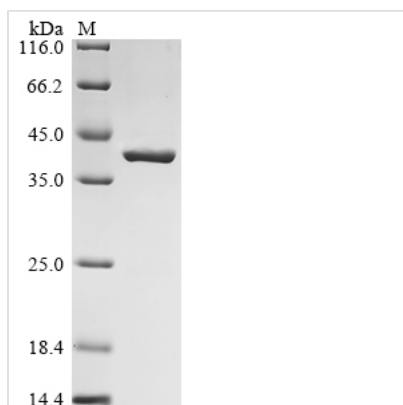




Recombinant Lake Victoria marburgvirus

Transcriptional activator VP30 (VP30)

Product Code	CSB-EP327408LBQ
Storage	The shelf life is related to many factors, storage state, buffer ingredients, storage temperature and the stability of the protein itself. Generally, the shelf life of liquid form is 6 months at -20°C/-80°C. The shelf life of lyophilized form is 12 months at -20°C/-80°C.
Uniprot No.	P35258
Form	Liquid or Lyophilized powder
Storage Buffer	If the delivery form is liquid, the default storage buffer is Tris/PBS-based buffer, 5%-50% glycerol. If the delivery form is lyophilized powder, the buffer before lyophilization is Tris/PBS-based buffer, 6% Trehalose.
Product Type	Recombinant Protein
Immunogen Species	Lake Victoria marburgvirus (strain Musoke-80) (MARV) (Marburg virus (strain Kenya/Musoke/1980))
Purity	Greater than 85% as determined by SDS-PAGE.
Sequence	<p> MQQPRGRSRTRNHQVTPTIYHETQLPSKPHYTNYHPRARMSSTRSSAESSP TNHIPRARPPSTFNLSKPPPPPKDMCRNMKIGLPCADPTCNRDHDLDNLTNRE LLLMARKMLPNTDKTFRSPQDCGSPSLSKGLSKDKQEQTkdVLTLENLGHIL SYLHRSEIGKLDETSLRAALSLTCAGIRKTNRSINTMTLHMNHENLPQDQNG VIKQTYTGIHLDKGGQFEAALWQGWDKRSISLFFVQAALYVMNNIPCESSISVQA SYDHFILPQSQGKGQ </p>
Lead Time	3-7 business days
Research Area	Others
Source	E.coli
Gene Names	VP30
Expression Region	1-281aa
Notes	Repeated freezing and thawing is not recommended. Store working aliquots at 4°C for up to one week.
Tag Info	N-terminal 10xHis-tagged and C-terminal Myc-tagged
Mol. Weight	39.1 kDa
Protein Description	Full Length
Image	



(Tris-Glycine gel) Discontinuous SDS-PAGE (reduced) with 5% enrichment gel and 15% separation gel.

Reconstitution

We recommend that this vial be briefly centrifuged prior to opening to bring the contents to the bottom. Please reconstitute protein in deionized sterile water to a concentration of 0.1-1.0 mg/mL. We recommend to add 5-50% of glycerol (final concentration) and aliquot for long-term storage at -20^o/-80^o. Our default final concentration of glycerol is 50%. Customers could use it as reference.