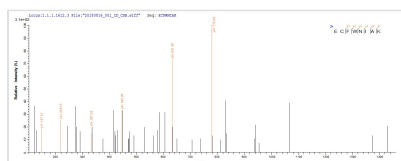




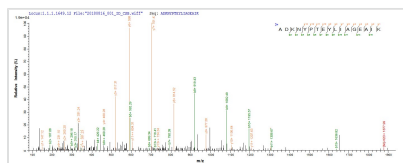
Recombinant Treponema phagedenis Treponemal membrane protein B (tmpB)

Product Code	CSB-EP333469THS
Storage	The shelf life is related to many factors, storage state, buffer ingredients, storage temperature and the stability of the protein itself. Generally, the shelf life of liquid form is 6 months at -20°C/-80°C. The shelf life of lyophilized form is 12 months at -20°C/-80°C.
Uniprot No.	P29720
Product Type	Recombinant Protein
Immunogen Species	Treponema phagedenis
Purity	Greater than 85% as determined by SDS-PAGE.
Sequence	ISYDDNEYSRKSRAYTQLAEKAYDAGEYDTAIEYSQLAENFAQESAHEYIKRMM ARNEAEDAMNKARTRYAWAKQQKADKNYPTEYLIAGEAIKAGGIAFDNKNYDV AVTCAEKALESLKTVEPEDKVIAKAAADKAAAEKAAKEKAAREKSAKDCAAKEK AAKEKAAKDCAAKEKAAKEKAAKDCAAKEKAAKEKAAAREMAAKEKAAKDCAA KEEAARKAAEEAAARKAAEEAAARKAAEEAAARIAAEAAARKAAEEAAARKA AEALYNEKGKVLPSYKVLTWKLDRECFWNIKNPAVYNDPFMWRLYEAN NKDKIPESNNPDWVEAETILVIPSIRGERREGLYDPVKYQALPKR
Lead Time	3-7 business days
Research Area	Others
Source	E.coli
Gene Names	tmpB
Protein Names	Recommended name: Treponemal membrane protein B Alternative name(s): Antigen tmpB
Expression Region	22-384aa
Notes	Repeated freezing and thawing is not recommended. Store working aliquots at 4°C for up to one week.
Tag Info	N-terminal 10xHis-tagged and C-terminal Myc-tagged
Mol. Weight	47.4 kDa
Protein Description	Full Length of Mature Protein

Image



Based on the SEQUEST from database of E.coli host and target protein, the LC-MS/MS Analysis result of CSB-EP333469THS could indicate that this peptide derived from E.coli-expressed Treponema phagedenis tmpB.



Based on the SEQUEST from database of E.coli host and target protein, the LC-MS/MS Analysis result of CSB-EP333469THS could indicate that this peptide derived from E.coli-expressed *Treponema phagedenis* tmpB.

Description

The construction of a plasmid coding for the *Treponema phagedenis* tmpB protein (22-384aa) is the initial step for the preparation of the recombinant *Treponema phagedenis* tmpB protein. The next is to transform the constructed plasmid into e.coli cells. e.coli cells containing the plasmid are screened and then cultured under conditions that promote the expression of the gene of interest. The protein is equipped with a N-terminal 10xHis tag and C-terminal Myc tag. After that, affinity purification is used to isolate and purify the recombinant tmpB protein from the cell lysate. Finally, the resulting recombinant tmpB protein undergoes SDS-PAGE analysis, demonstrating a purity greater than 85%.

Reconstitution

We recommend that this vial be briefly centrifuged prior to opening to bring the contents to the bottom. Please reconstitute protein in deionized sterile water to a concentration of 0.1-1.0 mg/mL. We recommend to add 5-50% of glycerol (final concentration) and aliquot for long-term storage at -20°C/-80°C. Our default final concentration of glycerol is 50%. Customers could use it as reference.