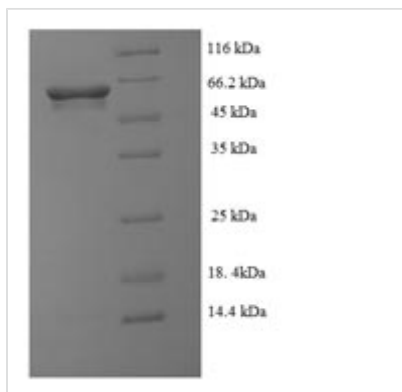


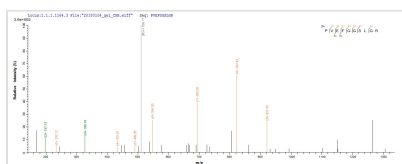


Recombinant *Peptoclostridium difficile* NAD-specific glutamate dehydrogenase (gluD)

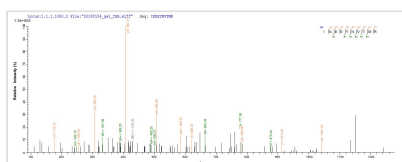
Product Code	CSB-EP335284DUN
Storage	The shelf life is related to many factors, storage state, buffer ingredients, storage temperature and the stability of the protein itself. Generally, the shelf life of liquid form is 6 months at -20°C/-80°C. The shelf life of lyophilized form is 12 months at -20°C/-80°C.
Uniprot No.	P27346
Product Type	Recombinant Protein
Immunogen Species	<i>Clostridium difficile</i> (<i>Peptoclostridium difficile</i>)
Purity	Greater than 90% as determined by SDS-PAGE.
Sequence	MSGKDVNVFEMAQSQVKNACDKLGMEPAVYELLKEPMRVIEVSIPVKMDDGS IKTFKGFRSQHNDVGP TKGGIRFHQNVSRDEVKALSIWMTFKCSVTGIPYGG GKGGIIVDPSTLSQGELERLSRGYIDGIYKLIGEKVDVPAPDVNTNGQIMSWMV DEYNKLTGQSSIGVITGKPV EFGGSLGR TAATGFGVAVTAREAAAKLGIDMKK AKIAVQGIGNVGSYTVLNCEKLGGTVVAMAEWCKSEGSYAIYNENGLDGQAM LDYMKEHGNLLNFP GAKRISLEEFWASDV DIVIPAALENSITKEVAESIKAKLVC EAANGPTTPEADEVFAERGIVLTPDILT NAGGVTVS YFEWVQNLYGYWSEEE VEQKEEIAMVKAFESIWKIKEEYNVTMREAA YMHSIKKVAEAMKLRGWY
Lead Time	3-7 business days
Research Area	Others
Source	E.coli
Gene Names	gluD
Expression Region	1-421aa
Notes	Repeated freezing and thawing is not recommended. Store working aliquots at 4°C for up to one week.
Tag Info	N-terminal 6xHis-SUMO-tagged
Mol. Weight	62.0 kDa
Protein Description	Full Length
Image	



(Tris-Glycine gel) Discontinuous SDS-PAGE (reduced) with 5% enrichment gel and 15% separation gel.



Based on the SEQUEST from database of E.coli host and target protein, the LC-MS/MS Analysis result of CSB-EP335284DUN could indicate that this peptide derived from E.coli-expressed *Peptoclostridium difficile* (*Clostridium difficile*) gluD.



Based on the SEQUEST from database of E.coli host and target protein, the LC-MS/MS Analysis result of CSB-EP335284DUN could indicate that this peptide derived from E.coli-expressed *Peptoclostridium difficile* (*Clostridium difficile*) gluD.

Reconstitution

We recommend that this vial be briefly centrifuged prior to opening to bring the contents to the bottom. Please reconstitute protein in deionized sterile water to a concentration of 0.1-1.0 mg/mL. We recommend to add 5-50% of glycerol (final concentration) and aliquot for long-term storage at -20°C/-80°C. Our default final concentration of glycerol is 50%. Customers could use it as reference.