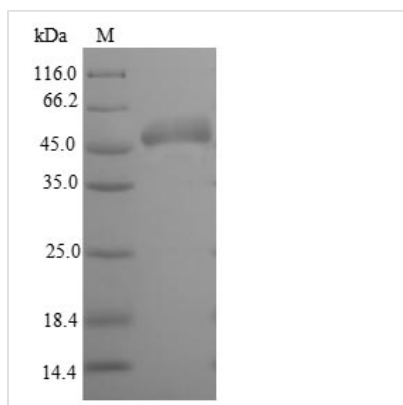




Recombinant Escherichia coli Glutamate/aspartate periplasmic-binding protein (gltI)

Product Code	CSB-EP336368ENV
Relevance	Part of the ABC transporter complex GltIJKL involved in glutamate and aspartate uptake. Binds to both glutamate and aspartate.
Storage	The shelf life is related to many factors, storage state, buffer ingredients, storage temperature and the stability of the protein itself. Generally, the shelf life of liquid form is 6 months at -20°C/-80°C. The shelf life of lyophilized form is 12 months at -20°C/-80°C.
Uniprot No.	P37902
Product Type	Recombinant Protein
Immunogen Species	Escherichia coli (strain K12)
Purity	Greater than 90% as determined by SDS-PAGE.
Sequence	DDAAPAAGSTLDKIAKNGVIVVGHRESSVPFSYYDNQQKVVGYSQDYSNAIVE AVKKKLNKPDQLQVKLIPITSQNRIPLLQNGTFDFECGSTTNNVERQKQAAFSDTI FVVGTRLLTKKGGDIKDFANLKDKAVVVTSGTTSEVLLNKLNEEQKMNMRIISA KDHGDSFRTLESGRAVAFMMDDALLAGERAKAKKPDNWEIVGKPQSQEAYG CMLRKDDPQFKKLMDDTIAQVQTSGEAEKWFDKWFKNPIPPKNLNMNFELSD EMKALFKEPNDKALN
Lead Time	3-7 business days
Research Area	others
Source	E.coli
Gene Names	gltI
Protein Names	Recommended name: Glutamate/aspartate periplasmic-binding protein
Expression Region	23-302aa
Notes	Repeated freezing and thawing is not recommended. Store working aliquots at 4°C for up to one week.
Tag Info	N-terminal 6xHis-SUMO-tagged
Mol. Weight	47.2kDa
Protein Description	Full Length of Mature Protein
Image	



(Tris-Glycine gel) Discontinuous SDS-PAGE (reduced) with 5% enrichment gel and 15% separation gel.

Reconstitution

We recommend that this vial be briefly centrifuged prior to opening to bring the contents to the bottom. Please reconstitute protein in deionized sterile water to a concentration of 0.1-1.0 mg/mL. We recommend to add 5-50% of glycerol (final concentration) and aliquot for long-term storage at -20°C/-80°C. Our default final concentration of glycerol is 50%. Customers could use it as reference.