

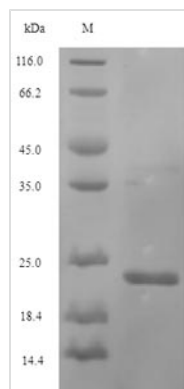


Recombinant Legionella pneumophila

Peptidoglycan-associated lipoprotein (pal)

| | |
|----------------------------|---|
| Product Code | CSB-EP340792LNY |
| Relevance | Very strongly associated with the peptidoglycan. |
| Storage | The shelf life is related to many factors, storage state, buffer ingredients, storage temperature and the stability of the protein itself. Generally, the shelf life of liquid form is 6 months at -20°C/-80°C. The shelf life of lyophilized form is 12 months at -20°C/-80°C. |
| Uniprot No. | P26493 |
| Alias | 19 kDa surface antigen PPL |
| Product Type | Recombinant Protein |
| Immunogen Species | Legionella pneumophila |
| Purity | Greater than 90% as determined by SDS-PAGE. |
| Sequence | CSKTPGSADGGAAVGDGDATAQGLGQMTHFAGQEPGESYTTQAPHNQLYLF AYDDSTLASKYLPSVNAQAEYLKTHPGARVMIAGHTDERGSREYNVALGERR ADTVAEILRMAGVSRQQIRVVSYGKERPANYGHDEASHAQNRNRRVEFIYEATR |
| Lead Time | 3-7 business days |
| Research Area | Others |
| Source | E.coli |
| Gene Names | pal |
| Expression Region | 22-176aa |
| Notes | Repeated freezing and thawing is not recommended. Store working aliquots at 4°C for up to one week. |
| Tag Info | N-terminal 6xHis-tagged |
| Mol. Weight | 20.8kDa |
| Protein Description | Full Length of Mature Protein |

Image



(Tris-Glycine gel) Discontinuous SDS-PAGE (reduced) with 5% enrichment gel and 15% separation gel.



Description

In the general approach to express the recombinant *Legionella pneumophila* pal protein, a plasmid encoding the *Legionella pneumophila* pal protein (22-176aa) is first constructed. The constructed plasmid is then introduced into *e.coli* cells. Plasmid-containing *e.coli* cells are screened and cultured under conditions that induce the protein expression. The protein is fused with a N-terminal 6xHis tag. Lysing the cultured cells and purifying the resulting recombinant pal protein through affinity purification. The SDS-PAGE analysis is conducted to confirm the presence of the recombinant pal protein and assess its purity. Its purity is over 90%.

Reconstitution

We recommend that this vial be briefly centrifuged prior to opening to bring the contents to the bottom. Please reconstitute protein in deionized sterile water to a concentration of 0.1-1.0 mg/mL. We recommend to add 5-50% of glycerol (final concentration) and aliquot for long-term storage at -20°C/-80°C. Our default final concentration of glycerol is 50%. Customers could use it as reference.