



Recombinant Escherichia coli Transketolase 1 (tktA)

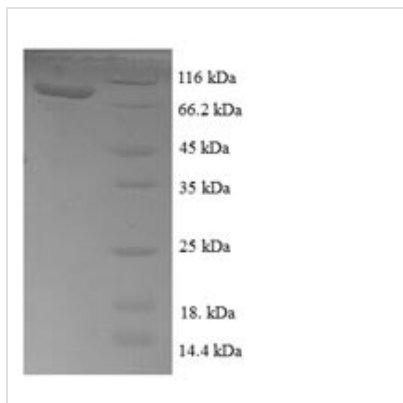
Product Code	CSB-EP340865ENV
Relevance	Catalyzes the reversible transfer of a two-carbon ketol group from sedoheptulose-7-phosphate to glyceraldehyde-3-phosphate, producing xylulose-5-phosphate and ribose-5-phosphate. Catalyzes the transfer of a two-carbon ketol group from a ketose donor to an aldose acceptor, via a covalent intermediate with the cofactor thiamine pyrophosphate.
Storage	The shelf life is related to many factors, storage state, buffer ingredients, storage temperature and the stability of the protein itself. Generally, the shelf life of liquid form is 6 months at -20°C/-80°C. The shelf life of lyophilized form is 12 months at -20°C/-80°C.
Uniprot No.	P27302
Product Type	Recombinant Protein
Immunogen Species	Escherichia coli (strain K12)
Purity	Greater than 90% as determined by SDS-PAGE.
Sequence	MSSRKELANAI RALSMDAVQKAKSGHPGAPMGMAIEVLWRDFLKHNPQNP SWADRDRFVLSNGHGSMLIYSLHLTG YDLPMEELKNFRQLH SKTPGHPEVG YTAGVETTTGPLGQGIANAVGMAIAEKT LAAQFNRP GHDIVDHYTYAFMGDGC MMEGISHEVCSLAGTLKLGKLI AFYDDNGISIDGHVEGWFTDDTAMRFEAYGW HVIRIDIDGHDAASIKRAVEE EARA VTDKPSLLMCKTIIGFGSPNKAGTHDSHGAP LGDAEIALTREQLGWKYAPFEIPSEIYAQWDAKEAGQAKESAWNEKFAAYAKA YPQEAAEFTRRMKGEMPSDFDAKAKEFI AKLQANPAKIASRKASQNAIEAFGP LLPEFLGGSADLAPSNLT LWSGSKAINEDAAGNYIHYGVREFGMTAIANGISLH GGFLPYTSTFLMFVEYARNAVRMAALMKQRQVMVYTHDSIGLGEDGP THQPV EQVASLRVTPNMSTWRPCDQVESAVAWKYGVERQDGPTALILSRQNLAQQE RTEEQLANIARGGYVLKDCAGQPELIFIATGSEVELAVAAYEKLTAEGVKARVV SMPSTDAFDKQDAAYRESVLPKAVTARVAVEAGIADYWYKYVGLNGAIVGMT TFGESAPAE LLFEEFGFTVDNVVAKAKELL
Lead Time	3-7 business days
Research Area	Others
Source	E.coli
Gene Names	tktA
Expression Region	1-663aa
Notes	Repeated freezing and thawing is not recommended. Store working aliquots at 4°C for up to one week.
Tag Info	N-terminal 6xHis-SUMO-tagged
Mol. Weight	88.2kDa



Protein Description

Full Length

Image



(Tris-Glycine gel) Discontinuous SDS-PAGE (reduced) with 5% enrichment gel and 15% separation gel.

Reconstitution

We recommend that this vial be briefly centrifuged prior to opening to bring the contents to the bottom. Please reconstitute protein in deionized sterile water to a concentration of 0.1-1.0 mg/mL. We recommend to add 5-50% of glycerol (final concentration) and aliquot for long-term storage at -20°C/-80°C. Our default final concentration of glycerol is 50%. Customers could use it as reference.