

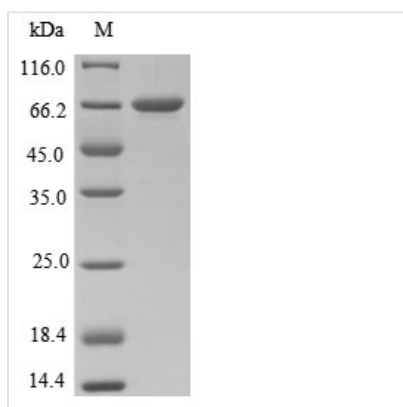


Recombinant Clostridium tetani Tetanus toxin (tetX), partial

Product Code	CSB-EP356416CMN
Relevance	Tetanus toxin acts by inhibiting neurotransmitter release. It binds to peripheral neuronal synapses, is internalized and moves by retrograde transport up the axon into the spinal cord where it can move between postsynaptic and presynaptic neurons. It inhibits neurotransmitter release by acting as a zinc endopeptidase that catalyzes the hydrolysis of the '76-Gln- -Phe-77' bond of synaptobrevin-2.
Storage	The shelf life is related to many factors, storage state, buffer ingredients, storage temperature and the stability of the protein itself. Generally, the shelf life of liquid form is 6 months at -20°C/-80°C. The shelf life of lyophilized form is 12 months at -20°C/-80°C.
Uniprot No.	P04958
Product Type	Recombinant Protein
Immunogen Species	Clostridium tetani (strain Massachusetts / E88)
Purity	Greater than 85% as determined by SDS-PAGE.
Sequence	PITINNFRYSDPVNNDTIIMMEPPYCKGLDIYYKAFKITDRIWIVPERYEFGTKPE DFNPPSSLIEGASEYYDPNYLRTDSDKDRFLQTMVKLFNRIKNNVAGEALLDKII NAIPYLGNSYSLLDKFDTNSNSVSFNLLEQDPSGATTKSAMLTNLIIFGPGPVLN KNEVRGIVLRVDNKNYFPCRDGFGSIMQMAFCPEYVPTFDNVIENTSLTIGKS KYFQDPALLMHელიHVLHGLYGMQVSSHEIIPSKQEIYMQHTYPISAEELFTFG GQDANLISIDIKNDLYEKTLDNDYKAIAANKLSQVTSCNDPNIDIDSYKQIYQQKYQF DKDSNGQYIVNEDKFQILYNSIMYGFTIEELGKKFNIKTRLSYFSMNHDPVKIPN LLDDTIYNDTEGFNIESKDLKSEYKGQNMVRVNTNAFRNVDSGLVSKLIGLCKK IIPPTNIRENLYNRTA
Lead Time	3-7 business days
Research Area	others
Source	E.coli
Gene Names	tetX
Protein Names	Tentoxylisin
Expression Region	2-457aa
Notes	Repeated freezing and thawing is not recommended. Store working aliquots at 4°C for up to one week.
Tag Info	N-terminal 6xHis-B2M-tagged
Mol. Weight	66.3 kDa
Protein Description	Partial



Image



(Tris-Glycine gel) Discontinuous SDS-PAGE (reduced) with 5% enrichment gel and 15% separation gel.

Reconstitution

We recommend that this vial be briefly centrifuged prior to opening to bring the contents to the bottom. Please reconstitute protein in deionized sterile water to a concentration of 0.1-1.0 mg/mL. We recommend to add 5-50% of glycerol (final concentration) and aliquot for long-term storage at -20°C/-80°C. Our default final concentration of glycerol is 50%. Customers could use it as reference.