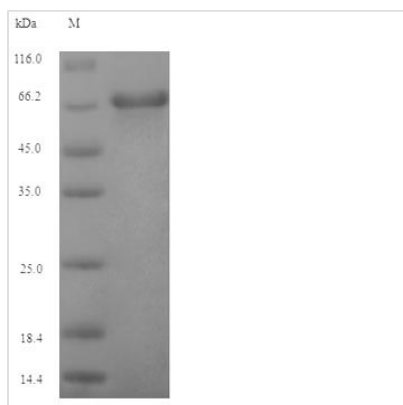


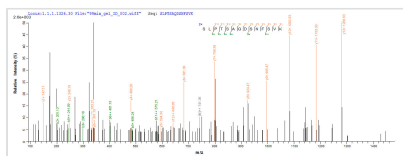


Recombinant Epstein-Barr virus Envelope glycoprotein GP350 (BLLF1), partial

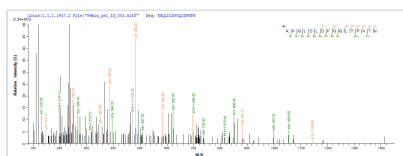
Product Code	CSB-EP360986EFA
Relevance	Initiates virion attachment to host B-lymphocyte cell, leading to virus entry. Acts by binding to host CR2 at the surface of B-lymphocytes, facilitating the binding of viral glycoprotein gp42 to HLA class II molecules. Attachment triggers virion-host membrane fusion and invasion of the host cell.
Storage	The shelf life is related to many factors, storage state, buffer ingredients, storage temperature and the stability of the protein itself. Generally, the shelf life of liquid form is 6 months at -20°C/-80°C. The shelf life of lyophilized form is 12 months at -20°C/-80°C.
Uniprot No.	P03200
Alias	Membrane antigen Short name: MA
Product Type	Recombinant Protein
Immunogen Species	Epstein-Barr virus (strain B95-8) (HHV-4) (Human herpesvirus 4)
Purity	Greater than 90% as determined by SDS-PAGE.
Sequence	<p>MEAALLVCQYTIQSLIHLTGEDPGFFNVEIPEFPFYPTCNVCTADVNVNTINFDVG</p> <p>GKKHQLDLDFGQLTPHTKAVYQPRGAFFGSENATNLFLELLGAGELALTMRS</p> <p>KKLPINVTTGEEQQVSLESVDVYFQDVFGTMWCHHAEMQNPVYLIPETVPYIK</p> <p>WDNCNSTNITAVVRAQGLDVTLP LSLPTSAQDSNFSVKTEMLGNEIDIECIMED</p> <p>GEISQVLP GDNKFNITCSGYESHVPSGGILTSTSPVATPIPGTGYAYSLRLTPRP</p> <p>VSRFLGNNSILYVFYSGNGPKASGGDYCIQSNIVFSDEIPASQDMPTNTTDTITY</p> <p>VGDNATYSVPMVTSEDANSPNVTVTAFWAWPNNTETDFKCKWTLTSGTPSG</p> <p>CENISGAFASNRTFDITVSGLG TAPKTLIITRTATNATTTTHKVIFSKAPESTTTS</p> <p>PTLNTTG FADPNTTTGLPSSTHVPTNL TAPASTGPTVSTADVTSPTPAGTTSG</p> <p>ASPVTPSPS</p>
Lead Time	3-7 business days
Research Area	Others
Source	E.coli
Gene Names	BLLF1
Expression Region	1-493aa
Notes	Repeated freezing and thawing is not recommended. Store working aliquots at 4°C for up to one week.
Tag Info	N-terminal 6xHis-SUMO-tagged
Mol. Weight	68.5kDa
Protein Description	Partial
Image	



(Tris-Glycine gel) Discontinuous SDS-PAGE (reduced) with 5% enrichment gel and 15% separation gel.



Based on the SEQUEST from database of E.coli host and target protein, the LC-MS/MS Analysis result of CSB-EP360986EFA could indicate that this peptide derived from E.coli-expressed Epstein-Barr virus (strain B95-8) (HHV-4) (Human herpesvirus 4) BLLF1.



Based on the SEQUEST from database of E.coli host and target protein, the LC-MS/MS Analysis result of CSB-EP360986EFA could indicate that this peptide derived from E.coli-expressed Epstein-Barr virus (strain B95-8) (HHV-4) (Human herpesvirus 4) BLLF1.

Reconstitution

We recommend that this vial be briefly centrifuged prior to opening to bring the contents to the bottom. Please reconstitute protein in deionized sterile water to a concentration of 0.1-1.0 mg/mL. We recommend to add 5-50% of glycerol (final concentration) and aliquot for long-term storage at -20°C/-80°C. Our default final concentration of glycerol is 50%. Customers could use it as reference.