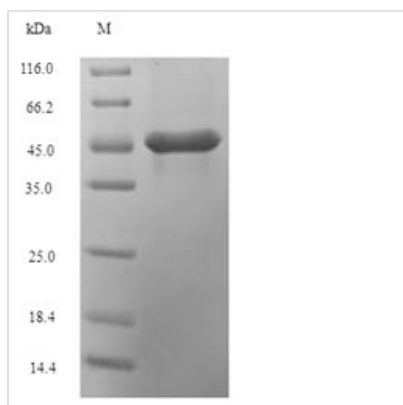




Recombinant Zea mays (Maize) Sucrose synthase 1 (SH-1), partial

Product Code	CSB-EP361346ZAX
Relevance	Sucrose-cleaving enzyme that provides UDP-glucose and fructose for various metabolic pathways. Most active in the sink tissues where it is responsible for the breakdown of the arriving sucrose.
Storage	The shelf life is related to many factors, storage state, buffer ingredients, storage temperature and the stability of the protein itself. Generally, the shelf life of liquid form is 6 months at -20°C/-80°C. The shelf life of lyophilized form is 12 months at -20°C/-80°C.
Uniprot No.	P04712
Alias	Shrunken-1 Sucrose-UDP glucosyltransferase 1
Product Type	Recombinant Protein
Immunogen Species	Zea mays (Maize)
Purity	Greater than 90% as determined by SDS-PAGE.
Sequence	NSEHKFVLKDKKKPIIFSMARLDRVKNMTGLVEMYGKNARLRELANLVIVAGDH GKESKDREEQAEFKMYSLIDEYKLGHIRWISAQMNRVRNGELYRYICDTKG AFVQPAFYEAFLTVIESMTCGLPTIATCHGGPAEIIVDGVSGLHIDPYHSDKAA DILVNFFDKCKADPSYWDEISQGGGLQRIYEKYTWKLYSERLMTLTGVYGFWKY VSNLERRETRRYIEMFYALKYRSLASQVPLSFD
Lead Time	Delivery time may differ from different purchasing way or location, please kindly consult your local distributors for specific delivery time.
Research Area	Others
Source	E.coli
Gene Names	SH-1
Expression Region	555-802aa
Notes	Repeated freezing and thawing is not recommended. Store working aliquots at 4°C for up to one week.
Tag Info	N-terminal 6xHis-SUMO-tagged
Mol. Weight	44.8kDa
Protein Description	Partial
Image	



(Tris-Glycine gel) Discontinuous SDS-PAGE (reduced) with 5% enrichment gel and 15% separation gel.

Reconstitution

We recommend that this vial be briefly centrifuged prior to opening to bring the contents to the bottom. Please reconstitute protein in deionized sterile water to a concentration of 0.1-1.0 mg/mL. We recommend to add 5-50% of glycerol (final concentration) and aliquot for long-term storage at -20°C/-80°C. Our default final concentration of glycerol is 50%. Customers could use it as reference.