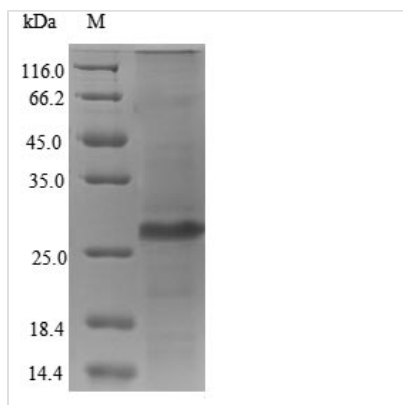


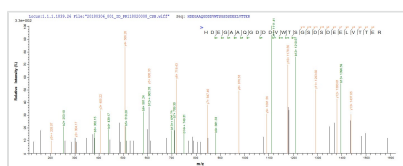


# Recombinant Human cytomegalovirus 65 kDa phosphoprotein (UL83), partial

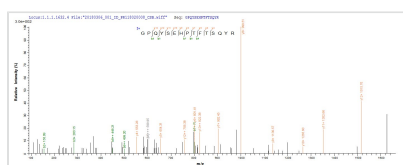
<b>Product Code</b>	CSB-EP361930HWV
<b>Relevance</b>	Counteracts the host antiviral immune response when activated and phosphorylated, by preventing IRF3 from entering the nucleus. Also participates in the transactivation of viral major immediate-early genes by the recruitment of host IFI16 to the promoters of these genes.
<b>Storage</b>	The shelf life is related to many factors, storage state, buffer ingredients, storage temperature and the stability of the protein itself. Generally, the shelf life of liquid form is 6 months at -20°C/-80°C. The shelf life of lyophilized form is 12 months at -20°C/-80°C.
<b>Uniprot No.</b>	P06725
<b>Alias</b>	65 kDa matrix phosphoprotein Phosphoprotein UL83 Tegument protein UL83
<b>Product Type</b>	Recombinant Protein
<b>Immunogen Species</b>	Human cytomegalovirus (strain AD169) (HHV-5) (Human herpesvirus 5)
<b>Purity</b>	Greater than 90% as determined by SDS-PAGE.
<b>Sequence</b>	FDIDLLLRGPGQYSEHPTFTSQYRIQKLEYRHTWDRHDEGAAQGDDDVWTS GSDSDEELVTTERKTPRVTGGGAMAGASTSAGRKRKSASSATACTSGVMTR GRLKAESTVAPEEDTDESDNEIHNP
<b>Lead Time</b>	Delivery time may differ from different purchasing way or location, please kindly consult your local distributors for specific delivery time.
<b>Research Area</b>	Microbiology
<b>Source</b>	E.coli
<b>Gene Names</b>	UL83
<b>Protein Names</b>	Recommended name: 65 kDa phosphoprotein Short name= pp65 Alternative name(s): 65 kDa matrix phosphoprotein Phosphoprotein UL83 Tegument protein UL83
<b>Expression Region</b>	351-480
<b>Notes</b>	Repeated freezing and thawing is not recommended. Store working aliquots at 4°C for up to one week.
<b>Tag Info</b>	N-terminal 6xHis-tagged
<b>Mol. Weight</b>	18.2kDa
<b>Protein Description</b>	Partial
<b>Image</b>	



(Tris-Glycine gel) Discontinuous SDS-PAGE (reduced) with 5% enrichment gel and 15% separation gel.



Based on the SEQUEST from database of E.coli host and target protein, the LC-MS/MS Analysis result of CSB-EP361930HWV could indicate that this peptide derived from E.coli-expressed Human cytomegalovirus (strain AD169) (HHV-5) (Human herpesvirus 5) UL83.



Based on the SEQUEST from database of E.coli host and target protein, the LC-MS/MS Analysis result of CSB-EP361930HWV could indicate that this peptide derived from E.coli-expressed Human cytomegalovirus (strain AD169) (HHV-5) (Human herpesvirus 5) UL83.

## Reconstitution

We recommend that this vial be briefly centrifuged prior to opening to bring the contents to the bottom. Please reconstitute protein in deionized sterile water to a concentration of 0.1-1.0 mg/mL. We recommend to add 5-50% of glycerol (final concentration) and aliquot for long-term storage at -20°C/-80°C. Our default final concentration of glycerol is 50%. Customers could use it as reference.