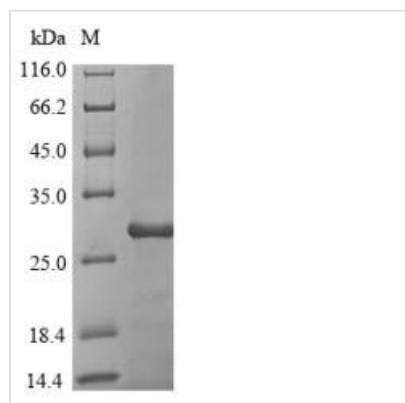




# Recombinant Streptomyces tendae Alpha-amylase inhibitor HOE-467A

<b>Product Code</b>	CSB-EP365519SQB
<b>Relevance</b>	Inhibits mammalian alpha-amylases specifically but has no action on plant and microbial alpha-amylases. Forms a tight stoichiometric 1:1 complex with alpha-amylase.
<b>Storage</b>	The shelf life is related to many factors, storage state, buffer ingredients, storage temperature and the stability of the protein itself. Generally, the shelf life of liquid form is 6 months at -20°C/-80°C. The shelf life of lyophilized form is 12 months at -20°C/-80°C.
<b>Uniprot No.</b>	P01092
<b>Product Type</b>	Recombinant Protein
<b>Immunogen Species</b>	Streptomyces tendae
<b>Purity</b>	Greater than 85% as determined by SDS-PAGE.
<b>Sequence</b>	DTTVSEPA PSCVTLYQSWRY SQADNGCAQTVTVKVVYEDDTEGLCYAVAPG QITTVGDGYIGSHGHARYLARCL
<b>Lead Time</b>	3-7 business days
<b>Research Area</b>	others
<b>Source</b>	E.coli
<b>Protein Names</b>	Tendamistat
<b>Expression Region</b>	31-104aa
<b>Notes</b>	Repeated freezing and thawing is not recommended. Store working aliquots at 4°C for up to one week.
<b>Tag Info</b>	N-terminal 10xHis-SUMO-tagged and C-terminal Myc-tagged
<b>Mol. Weight</b>	28.0kDa
<b>Protein Description</b>	Full Length of Mature Protein

## Image



(Tris-Glycine gel) Discontinuous SDS-PAGE (reduced) with 5% enrichment gel and 15% separation gel.

Based on the SEQUEST from database of *E.coli* host and target protein, the LC-MS/MS Analysis result of CSB-EP365519SQB could indicate that this peptide derived from *E.coli*-expressed *Streptomyces tendae* N/A.

Based on the SEQUEST from database of E.coli host and target protein, the LC-MS/MS Analysis result of CSB-EP365519SQB could indicate that this peptide derived from E.coli-expressed *Streptomyces tendae* N/A.

## Reconstitution

We recommend that this vial be briefly centrifuged prior to opening to bring the contents to the bottom. Please reconstitute protein in deionized sterile water to a concentration of 0.1-1.0 mg/mL. We recommend to add 5-50% of glycerol (final concentration) and aliquot for long-term storage at -20°C/-80°C. Our default final concentration of glycerol is 50%. Customers could use it as reference.