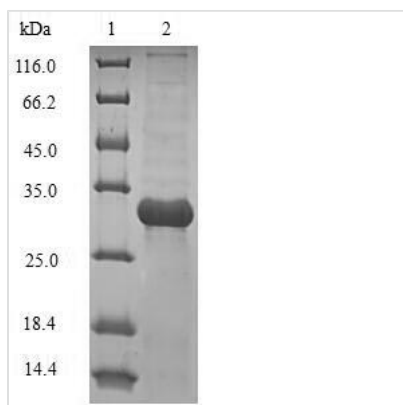




# Recombinant *Klebsiella pneumoniae* Outer membrane protein assembly factor BamA (bamA), partial

<b>Product Code</b>	CSB-EP473705KBH
<b>Relevance</b>	Part of the outer membrane protein assembly complex, which is involved in assembly and insertion of beta-barrel proteins into the outer membrane. Constitutes, with BamD, the core component of the assembly machinery.
<b>Storage</b>	The shelf life is related to many factors, storage state, buffer ingredients, storage temperature and the stability of the protein itself. Generally, the shelf life of liquid form is 6 months at -20°C/-80°C. The shelf life of lyophilized form is 12 months at -20°C/-80°C.
<b>Uniprot No.</b>	B5Y1J4
<b>Storage Buffer</b>	Tris-based buffer, 50% glycerol
<b>Product Type</b>	Recombinant Proteins
<b>Immunogen Species</b>	<i>Klebsiella pneumoniae</i> (strain 342)
<b>Purity</b>	Greater than 90% as determined by SDS-PAGE.
<b>Sequence</b>	FVVKDIHFEG LQRVAVGAALLSMPVRPGDTVTDDDISNTIRALFATGNFEDVRV LRDGD TLLVQVKERPTIASITFSGNKS VKDDMLKQNLEASGVRVGESLDRTTIA DIEKGLEDFYYSVGKYSASVKA VVTPLPRNRVDLKL VFQEG
<b>Lead Time</b>	3-7 business days
<b>Research Area</b>	others
<b>Source</b>	E.coli
<b>Gene Names</b>	bamA
<b>Protein Names</b>	Recommended name: Outer membrane protein assembly factor yaeT
<b>Expression Region</b>	24-172aa
<b>Notes</b>	Repeated freezing and thawing is not recommended. Store working aliquots at 4°C for up to one week.
<b>Tag Info</b>	N-terminal 10XHis-B2M-tagged and C-terminal Myc-tagged
<b>Mol. Weight</b>	33.3kDa
<b>Protein Description</b>	Partial

Image



(Tris-Glycine gel) Discontinuous SDS-PAGE (reduced) with 5% enrichment gel and 15% separation gel.