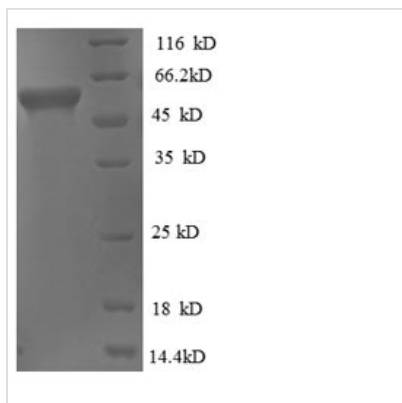




Recombinant *Thermus thermophilus* Glycerol kinase (glpK)

Product Code	CSB-EP524072TNR
Relevance	Key enzyme in the regulation of glycerol uptake and metabolism. Catalyzes the phosphorylation of glycerol to yield sn-glycerol 3-phosphate.
Storage	The shelf life is related to many factors, storage state, buffer ingredients, storage temperature and the stability of the protein itself. Generally, the shelf life of liquid form is 6 months at -20°C/-80°C. The shelf life of lyophilized form is 12 months at -20°C/-80°C.
Uniprot No.	O66131
Alias	ATP:glycerol 3-phosphotransferase
Product Type	Recombinant Protein
Immunogen Species	<i>Thermus thermophilus</i>
Purity	Greater than 90% as determined by SDS-PAGE.
Sequence	MNQYMLAIDQGTSSRAILFNQKGEIVHMAQKEFTQYFPQPGWVEHNANEIW GSVLAVIASVLSEAQVKPEQVAGIGITNQRETTVVWEKDTGNPIYNAIVWQSRQ TAGICDELKAKGYDPLFRKKTGLLIDAYFSGTKVKWILDHVDGARERAERGELL FGTIDTWLIWKLSGGRVHVTDYSNASRTLTMFNIHTLEWDDILLDILGVPKAMLP EVRPSSEVYAKTAPYHFFGVEVPIAGAAGDQQAALFGQACFTEGMAKNTYGT GCFMLMNTGEKAVASKHGLLTIAWGIDGKVEYALEGSIFVAGSAIQWLRDGL RMIKTAADSETYAEKVESTDGVYVVPFIFGLGTPYWDSEVRGAVFGLTRGTTK EHFIRATLESLAYQTKDVLAVMEADSGISLTTLRVDGGAVKNNFLMQFQSDLLA VPVERPVVNETTALGAAYLAGLAVGYWNSRDDIAAQWQLERRFEPKMDDDK RTMLYDGWKKAVRAAMAFK
Lead Time	Delivery time may differ from different purchasing way or location, please kindly consult your local distributors for specific delivery time.
Research Area	Others
Source	E.coli
Gene Names	glpK
Expression Region	1-496aa
Notes	Repeated freezing and thawing is not recommended. Store working aliquots at 4°C for up to one week.
Tag Info	N-terminal 6xHis-tagged
Mol. Weight	58.8kDa
Protein Description	Full Length
Image	



(Tris-Glycine gel) Discontinuous SDS-PAGE (reduced) with 5% enrichment gel and 15% separation gel.

Reconstitution

We recommend that this vial be briefly centrifuged prior to opening to bring the contents to the bottom. Please reconstitute protein in deionized sterile water to a concentration of 0.1-1.0 mg/mL. We recommend to add 5-50% of glycerol (final concentration) and aliquot for long-term storage at -20°C/-80°C. Our default final concentration of glycerol is 50%. Customers could use it as reference.