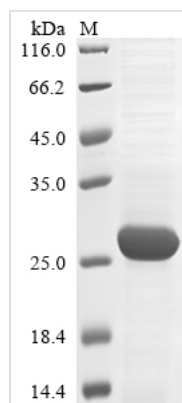




# Recombinant Human Retinoblastoma-like protein 2 (RBL2), partial

<b>Product Code</b>	CSB-EP600921HU
<b>Storage</b>	The shelf life is related to many factors, storage state, buffer ingredients, storage temperature and the stability of the protein itself. Generally, the shelf life of liquid form is 6 months at -20°C/-80°C. The shelf life of lyophilized form is 12 months at -20°C/-80°C.
<b>Uniprot No.</b>	Q08999
<b>Form</b>	Liquid or Lyophilized powder
<b>Storage Buffer</b>	If the delivery form is liquid, the default storage buffer is Tris/PBS-based buffer, 5%-50% glycerol. If the delivery form is lyophilized powder, the buffer before lyophilization is Tris/PBS-based buffer, 6% Trehalose.
<b>Product Type</b>	Recombinant Human Retinoblastoma-like protein 2(RBL2),partial
<b>Immunogen Species</b>	Homo sapiens (Human)
<b>Purity</b>	Greater than 85% as determined by SDS-PAGE.
<b>Sequence</b>	TPVSTATHSLRSLTMLTGLRNAPSEKLEQILRTCSRDPQTQAIANRLKEMFEIYS QHFQPDDEFSNCAKEIASKHFRFAEMLYYKVLESVIEQEQKRLGDMDLGILE QDAFHRSLLACCLEVVTFSYKPPGNFPFITEIFDVPLYHFYKVIEVFIRAEDGLC REVVKHLNQIEEQILDHLAWKPESPLWEKIRDNENRV
<b>Lead Time</b>	Delivery time may differ from different purchasing way or location, please kindly consult your local distributors for specific delivery time.
<b>Research Area</b>	Cancer
<b>Source</b>	E.coli
<b>Gene Names</b>	RBL2
<b>Expression Region</b>	417-616aa
<b>Notes</b>	Repeated freezing and thawing is not recommended. Store working aliquots at 5°C for up to one week.
<b>Tag Info</b>	N-terminal 6xHis-tagged
<b>Mol. Weight</b>	27.4 kDa
<b>Protein Description</b>	Partial
<b>Image</b>	



(Tris-Glycine gel) Discontinuous SDS-PAGE (reduced) with 5% enrichment gel and 15% separation gel.

## Description

Expressing the recombinant Human RBL2 protein generally involves constructing a plasmid encoding the Human RBL2 protein (417-616aa). This plasmid is introduced into e.coli cells, followed by the selection and culturing of positive e.coli cells, induction of protein expression, and subsequent cell lysis. The protein is fused with a N-terminal 6xHis tag. The recombinant Human RBL2 protein is purified through affinity purification, and SDS-PAGE analysis is conducted to confirm the presence of the protein and determine its purity. This protein exhibits a purity exceeding 85%.

## Reconstitution

We recommend that this vial be briefly centrifuged prior to opening to bring the contents to the bottom. Please reconstitute protein in deionized sterile water to a concentration of 0.1-1.0 mg/mL. We recommend to add 5-50% of glycerol (final concentration) and aliquot for long-term storage at -20~-80°. Our default final concentration of glycerol is 50%. Customers could use it as reference.