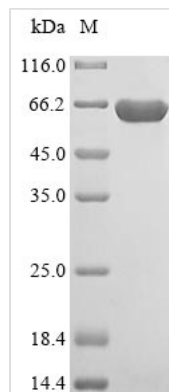




Recombinant Human NADP-dependent malic enzyme, mitochondrial (ME3), partial

Product Code	CSB-EP613700HU
Abbreviation	ME3
Storage	The shelf life is related to many factors, storage state, buffer ingredients, storage temperature and the stability of the protein itself. Generally, the shelf life of liquid form is 6 months at -20°C/-80°C. The shelf life of lyophilized form is 12 months at -20°C/-80°C.
Uniprot No.	Q16798
Product Type	Recombinant Protein
Immunogen Species	Homo sapiens (Human)
Purity	Greater than 85% as determined by SDS-PAGE.
Sequence	RWTPTAPAQGCHSKPGPARPVPLKKRGYDVTRNPHLNKGMAFTLEERLQLGI HGLIPPCFLSQDVQLLRIMRYRERQQSDLDKYIILMTLQDRNEKLFYRVLTSDV EKFMPIVYTPTVGLACQHYGLTFRPRGLFITIHDKGHLATMLNSWPEDNIKAV VVTGGERILGLGDLGCYGMGIPVGKLALYTACGGVNPQQCLPVLLDVGTNNEE LLRDPLYIGLKHQRVHKGAYDDLDEFMQAVTDKFGINCLIQFEDFANANAFRL LNKYRNKYCMFNDDIQGTASVAVAGILAALRITKNKLSNHVVFVQGAGEAAMGI AHLVMALEKEGVPAEATRKIWMVDSKGLIVKGRSHLNHEKEMFAQDHPEV NSLEEVVRLVKPTAIGVAAIAGAFTEQILRDMASFHERPIIFALSNPSTKAECTA EKCYRVTEGRGIFASGSPFKSVTLEDGKTFIPGQGNNAYVFPGVALGVIAGGIR HIPDEIFLLTAEQIAQEVSEQHLSQGRLYPPLSTIRDVSLRIAIVLDYAYKHNL SYYPEPKDKEAFVRSVLVYTPDYDSFTLD
Lead Time	3-7 business days
Research Area	others
Source	E.coli
Gene Names	ME3
Protein Names	Malic enzyme 3
Expression Region	24-590aa
Notes	Repeated freezing and thawing is not recommended. Store working aliquots at 4°C for up to one week.
Tag Info	N-terminal 6xHis-tagged
Mol. Weight	67.2 kDa
Protein Description	Partial
Image	



(Tris-Glycine gel) Discontinuous SDS-PAGE (reduced) with 5% enrichment gel and 15% separation gel.

Description

Dive into the world of enzymatic research with our premium Recombinant Human ME3 protein. This NADP-dependent malic enzyme, mitochondrial (NADP-ME; Malic enzyme 3) is specifically engineered in an E. coli expression system, providing a reliable and efficient product for your research needs. The partial protein (24-590aa) ensures outstanding performance in various experimental setups.

Featuring an N-terminal 6xHis-tag for easy protein purification and detection, our Recombinant Human ME3 protein boasts a purity greater than 85% as determined by SDS-PAGE. The protein is available in both liquid and lyophilized powder forms, providing versatility and flexibility for your research applications. This premium product supports your investigations into the intricate world of enzymatic processes.

Reconstitution

We recommend that this vial be briefly centrifuged prior to opening to bring the contents to the bottom. Please reconstitute protein in deionized sterile water to a concentration of 0.1-1.0 mg/mL. We recommend to add 5-50% of glycerol (final concentration) and aliquot for long-term storage at -20°C/-80°C. Our default final concentration of glycerol is 50%. Customers could use it as reference.