



Recombinant Human Mitochondrial import receptor subunit TOM34 (TOMM34)

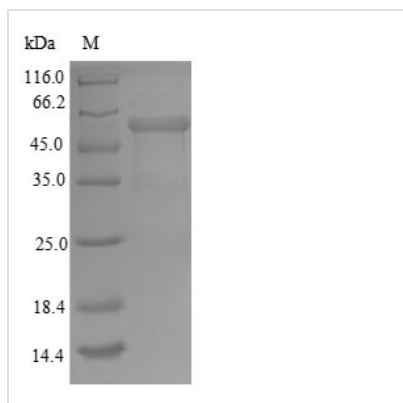
Product Code	CSB-EP623014HU
Relevance	Plays a role in the import of cytosolically synthesized preproteins into mitochondria. Binds the mature portion of precursor proteins. Interacts with cellular components, and possesses weak ATPase activity. May be a chaperone-like protein that helps to keep newly synthesized precursors in an unfolded import compatible state.
Abbreviation	TOMM34
Storage	The shelf life is related to many factors, storage state, buffer ingredients, storage temperature and the stability of the protein itself. Generally, the shelf life of liquid form is 6 months at -20°C/-80°C. The shelf life of lyophilized form is 12 months at -20°C/-80°C.
Uniprot No.	Q15785
Alias	Translocase of outer membrane 34 kDa subunit
Product Type	Recombinant Protein
Immunogen Species	Homo sapiens (Human)
Purity	Greater than 90% as determined by SDS-PAGE.
Sequence	MAPKFPDSVEELRAAGNESFRNGQYAEASALYGRALRVLQAQGSSDPEEESV LYSNRAACHLKDGNCRDCTALALVPFSIKPLLRASAYEAELEKYPMAV DYKTVLQIDDNVTSAVEGINRMTRALMDSLGPWRLKLPSIPLVPVSAQKRWN SLPSENHKEMAKSKSKETTATKNRVPSAGDVEKARVLKEEGNELVKKGNHKK AIEKYESLLCSNLESATYSNRALCYLVLKQYTEAVKDCTEALKLDGKNVKAFY RRAQAHKALKDYKSSFADISNLLQIEPRNGPAQKLRQEVKQNLH
Lead Time	Delivery time may differ from different purchasing way or location, please kindly consult your local distributors for specific delivery time.
Research Area	Signal Transduction
Source	E.coli
Gene Names	TOMM34
Protein Names	Recommended name: Mitochondrial import receptor subunit TOM34 Short name= hTom34 Alternative name(s): Translocase of outer membrane 34 kDa subunit
Expression Region	1-309aa
Notes	Repeated freezing and thawing is not recommended. Store working aliquots at 4°C for up to one week.
Tag Info	N-terminal GST-tagged
Mol. Weight	61.6kDa



Protein Description

Full Length

Image



(Tris-Glycine gel) Discontinuous SDS-PAGE (reduced) with 5% enrichment gel and 15% separation gel.

Reconstitution

We recommend that this vial be briefly centrifuged prior to opening to bring the contents to the bottom. Please reconstitute protein in deionized sterile water to a concentration of 0.1-1.0 mg/mL. We recommend to add 5-50% of glycerol (final concentration) and aliquot for long-term storage at -20°C/-80°C. Our default final concentration of glycerol is 50%. Customers could use it as reference.