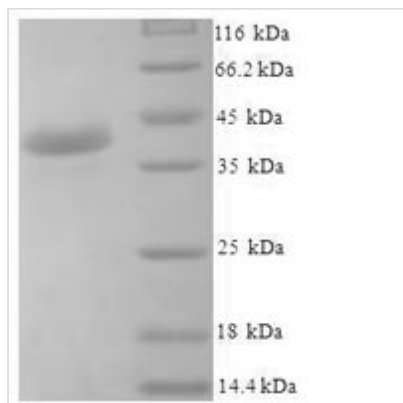




Recombinant Human Josephin-1 (JOSD1)

Product Code	CSB-EP624012HU
Relevance	Deubiquitinates monoubiquitinated probes (in vitro). When ubiquitinated, cleaves 'Lys-63'-linked and 'Lys-48'-linked poly-ubiquitin chains (in vitro), hence may act as a deubiquitinating enzyme. May increase macropinocytosis and suppress clathrin- and caveolae-mediated endocytosis. May enhance mbrane dynamics and cell motility independently of its catalytic activity.
Storage	The shelf life is related to many factors, storage state, buffer ingredients, storage temperature and the stability of the protein itself. Generally, the shelf life of liquid form is 6 months at -20°C/-80°C. The shelf life of lyophilized form is 12 months at -20°C/-80°C.
Uniprot No.	Q15040
Alias	Josephin domain-containing protein 1
Product Type	Recombinant Protein
Immunogen Species	Homo sapiens (Human)
Purity	Greater than 90% as determined by SDS-PAGE.
Sequence	MSCVPWKGDKAKSESLELPQAAPPQIYHEKQRRELCALHALNNVFQDSNAFT RDTLQEIFQRLSPNTMVTPHKKSM LGNGNYDVNVIMAAALQTKGYEAVWWDKR RDVGVIALTNVMGFIMNLPSSLCWGPLKLPKRQHWICVREVG GAYYNLDSKL KMPEWIGGESELRKFLKHHLRGKNCELLLVVPEEVEAHQSWRTDV
Lead Time	Delivery time may differ from different purchasing way or location, please kindly consult your local distributors for specific delivery time.
Research Area	Cell Biology
Source	E.coli
Gene Names	JOSD1
Expression Region	1-202aa
Notes	Repeated freezing and thawing is not recommended. Store working aliquots at 4°C for up to one week.
Tag Info	N-terminal 6xHis-SUMO-tagged
Mol. Weight	39.2kDa
Protein Description	Full Length
Image	



(Tris-Glycine gel) Discontinuous SDS-PAGE (reduced) with 5% enrichment gel and 15% separation gel.

Reconstitution

We recommend that this vial be briefly centrifuged prior to opening to bring the contents to the bottom. Please reconstitute protein in deionized sterile water to a concentration of 0.1-1.0 mg/mL. We recommend to add 5-50% of glycerol (final concentration) and aliquot for long-term storage at -20°C/-80°C. Our default final concentration of glycerol is 50%. Customers could use it as reference.