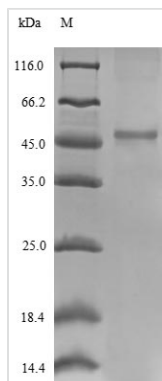




Recombinant Escherichia coli 30S ribosomal protein S2 (rpsB)

Product Code	CSB-EP633452EGW
Abbreviation	rpsB
Storage	The shelf life is related to many factors, storage state, buffer ingredients, storage temperature and the stability of the protein itself. Generally, the shelf life of liquid form is 6 months at -20°C/-80°C. The shelf life of lyophilized form is 12 months at -20°C/-80°C.
Uniprot No.	Q1RG21
Product Type	Recombinant Protein
Immunogen Species	Escherichia coli (strain UTI89 / UPEC)
Purity	Greater than 90% as determined by SDS-PAGE.
Sequence	MATVSMRDMLKAGVHFGHQTRYWNPKMKPFIFGARNKVHIINLEKTVPMFNE ALAE LN KIASRKGKILFVGTKRAASEAVKDAALSCDQFFVNHRWLGGMLTNWK TVRQSIKRLKDLETQSQDGTDFDKLTKEALMRTRELEKLENSLGGIKDMGGLP DALFVIDADHEHIAIKEANNLGIPVFAIVDTNSDPDGVDFVIPGNDDAIRAVTLYL GAVAATVREGRSQDLASQAEESFVEAE
Lead Time	Delivery time may differ from different purchasing way or location, please kindly consult your local distributors for specific delivery time.
Research Area	Microbiology
Source	E.coli
Gene Names	rpsB
Protein Names	Recommended name: 30S ribosomal protein S2
Expression Region	1-241aa
Notes	Repeated freezing and thawing is not recommended. Store working aliquots at 4°C for up to one week.
Tag Info	N-terminal 10xHis-SUMO-tagged and C-terminal Myc-tagged
Mol. Weight	46.7 kDa
Protein Description	Full Length
Image	



(Tris-Glycine gel) Discontinuous SDS-PAGE (reduced) with 5% enrichment gel and 15% separation gel.

Reconstitution

We recommend that this vial be briefly centrifuged prior to opening to bring the contents to the bottom. Please reconstitute protein in deionized sterile water to a concentration of 0.1-1.0 mg/mL. We recommend to add 5-50% of glycerol (final concentration) and aliquot for long-term storage at -20°C/-80°C. Our default final concentration of glycerol is 50%. Customers could use it as reference.