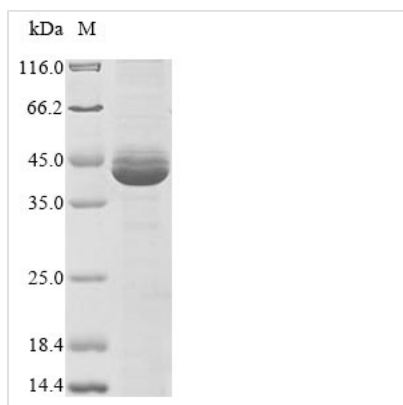


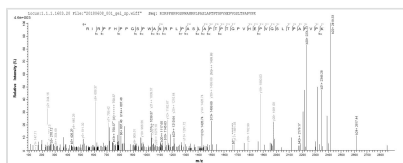


# Recombinant Epstein-Barr virus Replication and transcription activator (BRLF1), partial

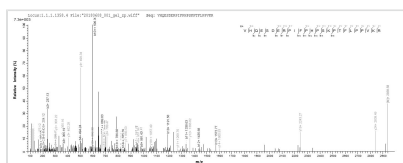
|                            |  |
|----------------------------|--|
| <b>Product Code</b>        | CSB-EP662061EFC  |
| <b>Abbreviation</b>        | BRLF1  |
| <b>Storage</b>             | The shelf life is related to many factors, storage state, buffer ingredients, storage temperature and the stability of the protein itself. Generally, the shelf life of liquid form is 6 months at -20°C/-80°C. The shelf life of lyophilized form is 12 months at -20°C/-80°C.      |
| <b>Uniprot No.</b>         | Q3KSS7   |
| <b>Product Type</b>        | Recombinant Protein  |
| <b>Immunogen Species</b>   | Epstein-Barr virus (strain GD1) (HHV-4) (Human herpesvirus 4)  |
| <b>Purity</b>              | Greater than 85% as determined by SDS-PAGE.  |
| <b>Sequence</b>            | PRLRAPKSRRTSRPNRGQTPCPSNAEEPEQPWIAAVHQESDERPIFPHPSKP<br>TFLPPVKRKKGLRDSREGMFLPKPEAGSAISDVFE GREVCQPKRIRPFHPPGS<br>PWANRPLPASLAPTPTGPVHEPVGSLTPAPVPKPLDPAPAVTPEASHLLEDPD<br>EETSQAVKALREMA DTVIPQKEEAAICGQMDLNHPPPRGHLDELTTTLESMT<br>DLNLDSP LTP ELN EILD TFLNDECLLHAMHISTGLSIFDTS LF |
| <b>Lead Time</b>           | 3-7 business days  |
| <b>Research Area</b>       | Others   |
| <b>Source</b>              | E.coli   |
| <b>Gene Names</b>          | BRLF1  |
| <b>Protein Names</b>       | Recommended name: Replication and transcription activator Short name= Rta<br>Alternative name(s): Immediate-early protein Rta  |
| <b>Expression Region</b>   | 352-605aa  |
| <b>Notes</b>               | Repeated freezing and thawing is not recommended. Store working aliquots at 4°C for up to one week.  |
| <b>Tag Info</b>            | N-terminal 10xHis-tagged and C-terminal Myc-tagged   |
| <b>Mol. Weight</b>         | 34.9 kDa   |
| <b>Protein Description</b> | Partial  |
| <b>Image</b>               |  |



(Tris-Glycine gel) Discontinuous SDS-PAGE (reduced) with 5% enrichment gel and 15% separation gel.



Based on the SEQUEST from database of E.coli host and target protein, the LC-MS/MS Analysis result of CSB-EP662061EFC could indicate that this peptide derived from E.coli-expressed Epstein-Barr virus (strain GD1) (HHV-4) (Human herpesvirus 4) BRLF1.



Based on the SEQUEST from database of E.coli host and target protein, the LC-MS/MS Analysis result of CSB-EP662061EFC could indicate that this peptide derived from E.coli-expressed Epstein-Barr virus (strain GD1) (HHV-4) (Human herpesvirus 4) BRLF1.

## Reconstitution

We recommend that this vial be briefly centrifuged prior to opening to bring the contents to the bottom. Please reconstitute protein in deionized sterile water to a concentration of 0.1-1.0 mg/mL. We recommend to add 5-50% of glycerol (final concentration) and aliquot for long-term storage at -20°C/-80°C. Our default final concentration of glycerol is 50%. Customers could use it as reference.