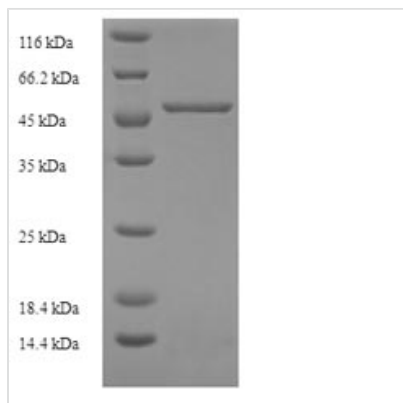




Recombinant Human Kidney mitochondrial carrier protein 1 (SLC25A30)

Product Code	CSB-EP732909HU
Relevance	Probable transporter.
Storage	The shelf life is related to many factors, storage state, buffer ingredients, storage temperature and the stability of the protein itself. Generally, the shelf life of liquid form is 6 months at -20°C/-80°C. The shelf life of lyophilized form is 12 months at -20°C/-80°C.
Uniprot No.	Q5SVS4
Alias	Solute carrier family 25 member 30
Product Type	Recombinant Protein
Immunogen Species	Homo sapiens (Human)
Purity	Greater than 90% as determined by SDS-PAGE.
Sequence	MSALNWKPFVYGGGLASITAECGTFPIDLTKTRLQIQGQTNDAKFKEIRYRGMLH ALVRIGREEGLKALYSGIAPAMLRQASYGTIKIGTYQSLKRLFIERPEDETLPINV ICGILSGVISSTIANPTDVLKIRMQAQSNITQGGMIGNFMNIYQQEGTRGLWKG VSLTAQRAAIVVGVELPVYDITKKHLILSGLMGDTVYTHFLSSFTCGLAGALASN PVDVVRTRMMNQRVLRDGRCSGYTGTLDCLLQTWKNEGFFALYKGFWPNW LRLGPWNIIFVITYEQLKKLDL
Lead Time	Delivery time may differ from different purchasing way or location, please kindly consult your local distributors for specific delivery time.
Research Area	Transport
Source	E.coli
Gene Names	SLC25A30
Expression Region	1-291aa
Notes	Repeated freezing and thawing is not recommended. Store working aliquots at 4°C for up to one week.
Tag Info	N-terminal 6xHis-SUMO-tagged
Mol. Weight	48.5kDa
Protein Description	Full Length
Image	



(Tris-Glycine gel) Discontinuous SDS-PAGE (reduced) with 5% enrichment gel and 15% separation gel.

Reconstitution

We recommend that this vial be briefly centrifuged prior to opening to bring the contents to the bottom. Please reconstitute protein in deionized sterile water to a concentration of 0.1-1.0 mg/mL. We recommend to add 5-50% of glycerol (final concentration) and aliquot for long-term storage at -20°C/-80°C. Our default final concentration of glycerol is 50%. Customers could use it as reference.